

Analyst Discovers a Major Flaw in IHME Model Used by White House; Actual Numbers are a Fraction of Expected

Posted at 8:30 pm on April 2, 2020 by Elizabeth Vaughn

 Share On Facebook

 Share On Twitter



President Donald J. Trump and Vice President Mike Pence, joined by Secretary of Education Betsy DeVos, left, and Secretary of Agriculture Sonny Perdue and members of the White House Coronavirus Task Force, delivers his remarks at a coronavirus (COVID-19) update briefing Friday, March 27, 2020, in the James S. Brady Press Briefing Room of the White House. (Official White House Photo by Joyce N. Boghosian)

Sean Davis, co-founder of *The Federalist*, took a serious look at the IHME (Institute for Health Metrics and Evaluation) Coronavirus model and called it “garbage.” Davis makes his case through a series of tweets (below).

Davis found that the actual numbers of hospitalizations on April 1 were a fraction of the numbers projected by the IHME model. The problem with the model, he discovered, is that it uses New York and New Jersey data and applies it to the rest of the states.

The actual numbers range from a low of 9% in Tennessee of the projection to a high of 50% in Virginia. Here are some examples:

The model projected that over 121,000 people would be hospitalized in the country yesterday. The actual number was 31,142. (25.7%)

Texas: Projection – 1,716; Actual – 196 (11.4%)

Georgia: Projection – 2,777; Actual – 952 (34.3%)

Virginia: Projection – 607; Actual – 305 (50%)

Tennessee: Projection – 2,214; Actual number – 200 (9%)

New York: Projection – 50,962; Actual number – 18,368 (36%)

Davis writes that if we’re going to shut down the entire nation’s economy to “flatten the curve” based on the projections of a single model, it shouldn’t be too much to ask that the model approximate reality when it comes to

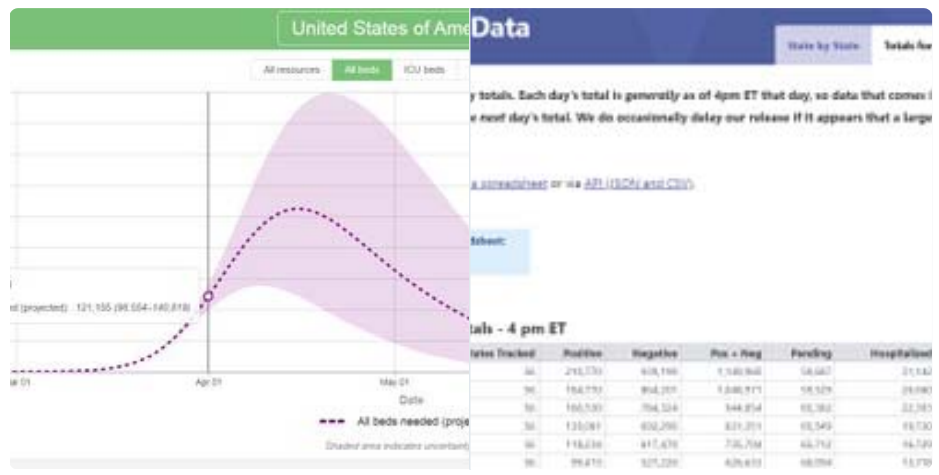
hospitalizations.



Sean Davis @seanmdav · 15h

The IMHE model for the Wuhan coronavirus that the White House is relying on is garbage. It is using NY/NJ data and applying it to the rest of the U.S.

It predicted that over 121,000 Americans would be hospitalized yesterday over the coronavirus. The actual number? 31,142.



Sean Davis @seanmdav

Let's look at some state data. The IMHE model predicted that 1,716 people in Texas would have been hospitalized yesterday due to the Wuhan coronavirus. The actual number of hospitalized Texans? 196 people.



1,044 4:00 PM - Apr 2, 2020

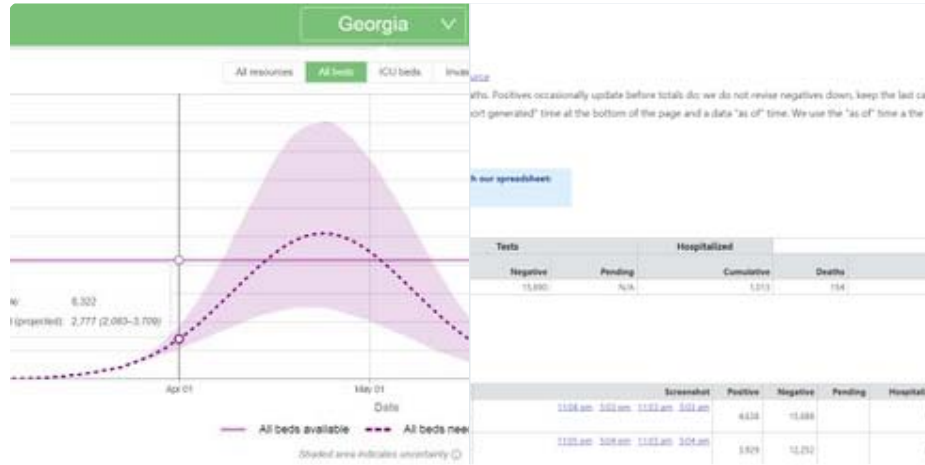
697 people are talking about this



Sean Davis @seanmdav · 15h

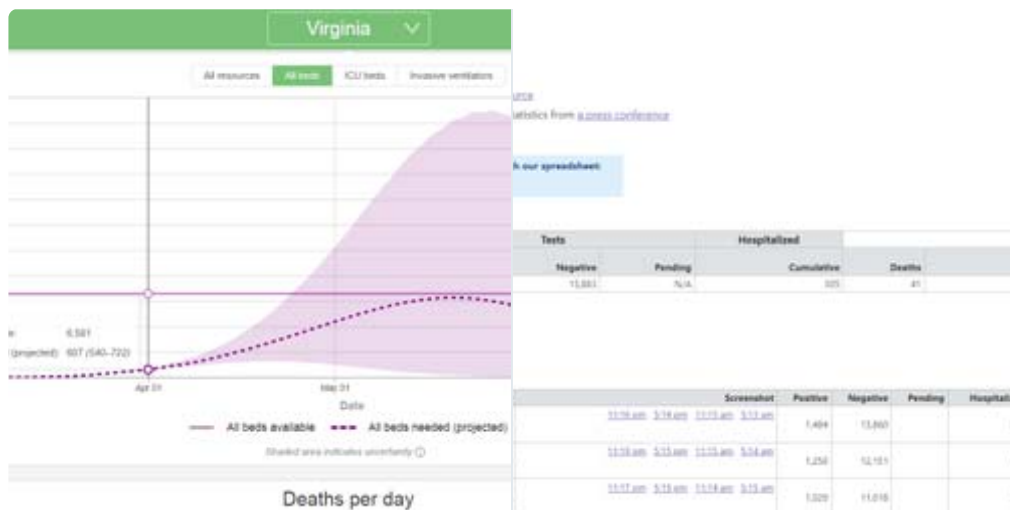
Replying to @seanmdav

In Georgia, the IHME model predicted that as of yesterday, 2,777 people would have been hospitalized due to the Wuhan coronavirus. The actual number of people hospitalized in Georgia? 952.



Sean Davis @seanmdav

In Virginia, the IHME model predicted that 607 Virginians would have been hospitalized as of yesterday due to the Wuhan coronavirus. The actual number? 305.



715 4:00 PM - Apr 2, 2020

398 people are talking about this



Sean Davis @seanmdav · 15h

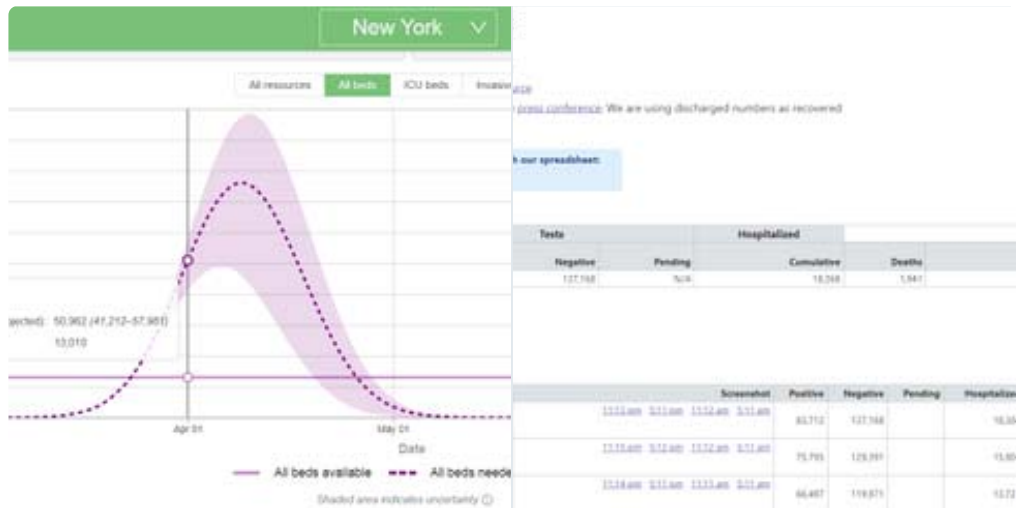
Replying to @seanmdav

In Tennessee, the IHME model predicted that 2,214 people in Tennessee would have been hospitalized by yesterday due to the Wuhan coronavirus. The actual number? 200.



Sean Davis @seanmdav

In New York, the IHME model predicted that as of yesterday, 50,962 people would have been hospitalized as of yesterday due to the Wuhan coronavirus. The actual number? 18,368.

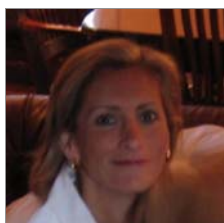


863 4:00 PM - Apr 2, 2020

579 people are talking about this

All projection data can be found [here](#).

All historical hospitalization data can be found [here](#).



Writer at RedState

Former financial consultant, options trader

MBA, Mom of three grown children

Email Elizabeth at Eliza.vaughn13@gmail.com

[Read more by Elizabeth Vaughn](#)

 Share On Facebook

 Share On Twitter

SHOW COMMENTS

TAGS: IMHE CORONAVIRUS MODEL FLAWED

SEAN DAVIS



DeBlasio: NYC Desperately Needs Help, But Not From a Christian Organization



Engineer at Port of Los Angeles Tried to Derail Train Into USNS Mercy

