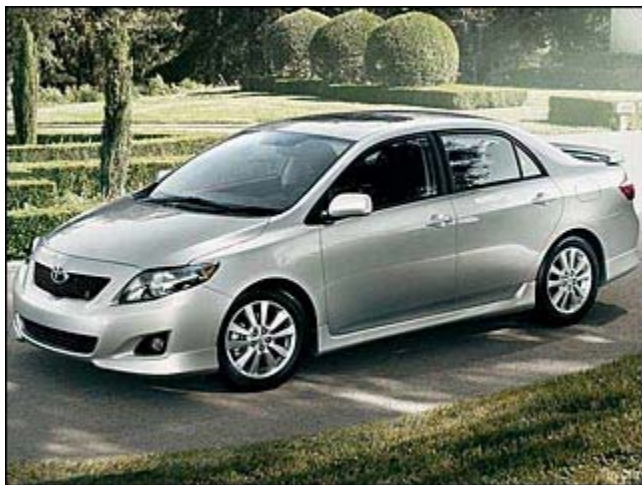


10. Toyota Corolla



November 2010 Sales: 16,202

Change vs. November 2009: Down 29.1%

MSRP: \$15,450 - \$18,960

Fuel Economy: 35 mpg Hwy/26 mpg City

The Toyota Corolla is among the best of the compact sedans: reliable and economical yet refined and comfortable.

The 2010 Corolla comes in five trims: Standard, LE, XLE, S, and XRS. The principal powertrain is a 132 horsepower, 1.8-liter dual VVT-I engine, matched with a five-speed manual or four-speed automatic transmission. An added powertrain, available only in XRS models, is a 158 horsepower, 2.4-liter VVT-I engine with a five-speed manual or new five-speed automatic transmission. All models come standard with front, side-impact and side-curtain airbags, ABS with brake assist, and whiplash protecting front seat active head restraints. New for 2010, Vehicle Stability Control with Traction Control is standard on all models.

Note: Currently there is a recall on this vehicle. [Click here for more information.](#)

- Research the Toyota Corolla
- [Toyota Corolla Overview](#)
- [Toyota Corolla Best Deals](#)
- [Toyota Corolla Local Dealer Price Quote](#)

9. Honda Civic





November 2010 Sales: 16,562

Change vs. November 2009: Up 16.3%

MSRP: \$15,605 - \$25,490

Fuel Economy: 34 mpg Hwy/26 mpg City

The Honda Civic is one of the most reliable and popular economy compact cars in its class. For years it has set the quality and performance standard for the affordable, compact car market.

Available in sedan or coupe bodies, all but the Si trim are powered by a 140 horsepower, 1.8-liter inline four-cylinder with a standard five-speed manual transmission and optional five-speed automatic. The performance-oriented Si comes with a 197 horsepower, 2.0-liter inline-four bolted only to a six-speed manual.

- [Research the Honda Civic](#)
- [Honda Civic Overview](#)
- [Honda Civic Best Deals](#)
- [Honda Civic Local Dealer Price Quote](#)

8. Honda Accord



November 2010 Sales: 16,795

Change vs. November 2009: Down 3.9%

MSRP: \$21,180 - \$29,730

Fuel Economy: 33 mpg Hwy/23 mpg City

The Accord is Honda's largest car, offering generous interior space for up to 5 people wrapped in stylish exterior sheet metal.

The Accord comes either as a two-door coupe or four-door sedan with a 2.4-liter four-cylinder or 3.5-liter V6 engine. The four-cylinder engines are available in five-speed manual or automatic transmission for both styles of the Accord, while the V6 sedan is only available in five-speed automatic. The V6 coupe is available with a six-speed manual or five-speed automatic. Cloth upholstery is standard on all but the EX-L models which feature leather seats and a leather-covered steering wheel. Safety is enhanced on all Accords with six standard airbags, including side-impact air bags for front seats and side curtain air bags. Four-wheel disc, anti-lock brakes, Vehicle Stability Assist with traction control, Brake Assist and active front head restraints also come standard.

- [Research the Honda Accord](#)

- Research the Honda Accord
- [Honda Accord Overview](#)
- [Honda Accord Best Deals](#)
- [Honda Accord Local Dealer Price Quote](#)

7. Ford Fusion



November 2010 Sales: 18,412

Change vs. November 2009: Up 22.8%

MSRP: \$19,720 - \$28,645

Fuel Economy: 29 mpg Hwy/22 mpg City

Attractive and purposeful, the 2011 Ford Fusion is a top choice among midsize sedans.

The Fusion is available in four trim levels, the S, SE, SEL, and Sport; offers three engines, as well as front-wheel or all-wheel drive, the Fusion has something for everyone. The power teams are a 175-hp 2.5L four-cylinder engine with a six-speed manual or a six-speed automatic transmission, a 240-hp 3.0L V6 with a six-speed automatic transmission, or a 263-hp 3.5L V6 with a six-speed automatic transmission with the Sport trim.

- Research the Ford Fusion
- [Ford Fusion Overview](#)
- [Ford Fusion Best Deals](#)
- [Ford Fusion Local Dealer Price Quote](#)

6. Dodge Ram 1500





November 2010 Sales: 18,206

Change vs. November 2009: Up 78.3%

MSRP: \$20,610 - \$41,585

Fuel Economy: 20 mpg Hwy/14 mpg City

The Dodge Ram 1500 offers bold styling with an aggressive "grille-forward" design, interiors with premium materials and innovative features, and big power from a choice of engines, making it ideal for work and play.

The Ram 1500 provides something for everyone with the choice of three cab styles (regular, Quad and Crew cabs), three wheelbases, 4x2 or 4x4 drive types, and 3.7-liter V6 or 4.7-liter V8 or 5.7-liter HEMI V8 engines. A multi-link coil spring rear suspension (in place of a traditional leaf spring suspension) improves ride and handling characteristics without sacrificing payload and towing capability.

- Research the Dodge Ram 1500
- [Dodge Ram 1500 Overview](#)
- [Dodge Ram 1500 Best Deals](#)
- [Dodge Ram 1500 Local Dealer Price Quote](#)

5. Honda CR-V



November 2010 Sales: 18,263

Change vs. November 2009: Up 25.4%

MSRP: \$21,695 - \$27,895

Fuel Economy: 28 mpg Hwy/21 mpg City

The Honda CR-V is a compact crossover SUV that delivers a balance of style, versatility and comfort, along with a high level of safety technology.

The five-passenger CR-V is available in both front-wheel and four-wheel drive configurations, each with a choice of four trim levels: LX, SE, EX and EX-L. All trim levels are powered by a 180-hp 2.4-liter inline four-cylinder engine, paired with a five-speed automatic transmission.

- Research the Honda CR-V
- [Honda CR-V Overview](#)
- [Honda CR-V Best Deals](#)
- [Honda CR-V Local Dealer Price Quote](#)

4. Nissan Altima



November 2010 Sales: 18,372

Change vs. November 2009: Up 13.7%

MSRP: \$19,900 - \$30,100

Fuel Economy: 32 mpg Hwy/23 mpg City

The front-wheel drive, five-passenger Nissan Altima combines performance and an attractive exterior as either a two-door coupe or a four-door sedan.

The Nissan Altima is powered by either a 175-hp 2.5-liter V6 or a 270-hp 3.5-liter V6 and the transmission choices include a six-speed manual or continuously variable transmission (CVT).

- Research the Nissan Altima
- [Nissan Altima Overview](#)
- [Nissan Altima Best Deals](#)
- [Nissan Altima Local Dealer Price Quote](#)

3. Toyota Camry



November 2010 Sales: 20,737

Change vs. November 2009: Down 27.4%

MSRP: \$19,720 - \$29,370

Fuel Economy: 33 mpg Hwy/22 mpg City

The benchmark Toyota Camry sedan continues its reputation of safety, reliability, and quality while offering fuel efficiency, space, and power.

The Camry is a front-wheel drive, five-passenger, four-door sedan featuring four trims: Base, LE, SE, and XLE. A new 2.5-liter four-cylinder engine and six-speed manual transmission are standard; a six-speed automatic transmission with sequential shifting is optional. LE, SE, and XLE models are available with a 3.5-liter V6 and six-speed automatic transmission with sequential shifting. Stability and traction control, six-airbags, and tire pressure monitor are standard.

Note: Currently there is a recall on this vehicle. [Click here for more information.](#)

- Research the Toyota Camry
- [Toyota Camry Overview](#)
- [Toyota Camry Best Deals](#)
- [Toyota Camry Local Dealer Price Quote](#)

2. Chevy Silverado



November 2010 Sales: 25,619

Change vs. November 2009: Up 11.1%

MSRP: \$20,850 - \$41,775

Fuel Economy: 20 mpg Hwy/15 mpg City

The Chevrolet Silverado works hard to live up to its reputation as the 'strongest, most dependable and longest lasting truck on the road'. The 1500 is the 'half-ton', model in Chevrolet's full-size pickup line-up.

There are four engine sizes to choose from: 4.3-liter V6, 4.8-liter V8, 5.3-liter V8, and 6.2-liter V8; and two transmissions: a four-speed automatic and a six-speed automatic. Like all Silverados, the 1500 is available in a wide array of bed sizes, wheelbases, drive types and cab sizes, as well as a variety of trim levels

- Research the Chevy Silverado
- [Chevy Silverado Overview](#)
- [Chevy Silverado Best Deals](#)
- [Chevy Silverado Local Dealer Price Quote](#)

1. Ford F-150



June 2010 Sales: 38,541

Change vs. June 2009: Up 21.1%

MSRP: \$22,415 - \$51,140

Fuel Economy: N/A

The Ford F-150 pickup truck offers some sweeping changes for 2011. Although the F-150 is not officially redesigned for 2011, there are four new engines available, several new trims are offered and the broad range of cab styles and pickup box lengths are still being offered.

The F-150 still offers the XL, STX, XLT, FX4 and Lariat trims, but for 2011, the FX2 is available on the 4x2 models. In addition, the very well equipped and distinctive King Ranch, Platinum, Harley Davidson and Lariat Limited trims are being introduced for 2011. Four new engines are available and all engines are mated to a fuel efficient 6-speed automatic transmission equipped with a tow haul mode.