

Transmission of material in this release is embargoed until
8:30 a.m. (EDT) **Friday, August 5, 2011**

USDL-11-1151

Technical information:

Household data: (202) 691-6378 • cpsinfo@bls.gov • www.bls.gov/cps
Establishment data: (202) 691-6555 • cesinfo@bls.gov • www.bls.gov/ces

Media contact: (202) 691-5902 • PressOffice@bls.gov

THE EMPLOYMENT SITUATION – JULY 2011

Total **nonfarm payroll employment** rose by 117,000 in July, and the **unemployment rate** was little changed at **9.1 percent**, the U.S. Bureau of Labor Statistics reported today. Job gains occurred in health care, retail trade, manufacturing, and mining. Government employment continued to trend down.

Chart 1. Unemployment rate, seasonally adjusted, July 2009 – July 2011

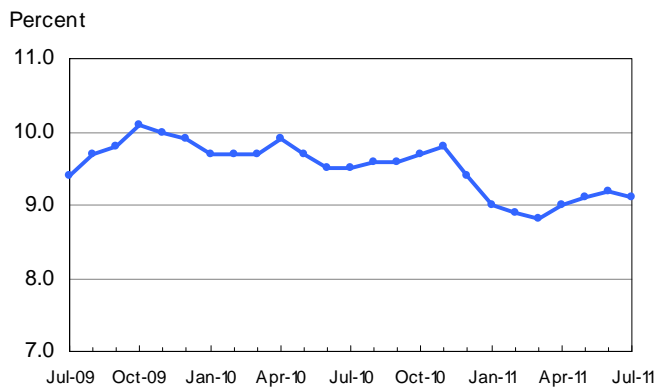
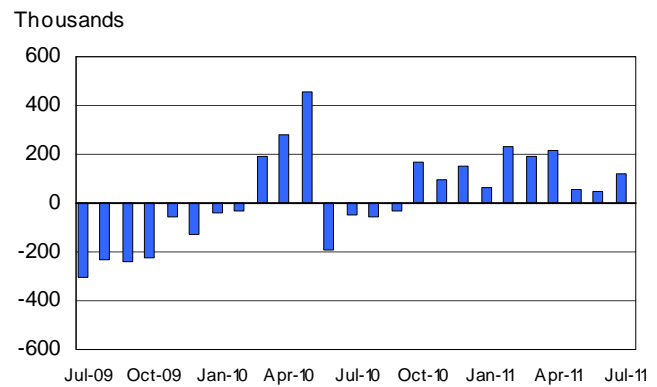


Chart 2. Nonfarm payroll employment over-the-month change, seasonally adjusted, July 2009 – July 2011



Household Survey Data

The number of **unemployed persons** (13.9 million) and the **unemployment rate** (9.1 percent) changed little in July. Since April, the unemployment rate has shown little definitive movement. The labor force, at 153.2 million, was little changed in July. (See table A-1.)

Among the **major worker groups**, the unemployment rates for adult men (9.0 percent), adult women (7.9 percent), teenagers (25.0 percent), whites (8.1 percent), blacks (15.9 percent), and Hispanics (11.3 percent) showed little or no change in July. The jobless rate for Asians was 7.7 percent, not seasonally adjusted. (See tables A-1, A-2, and A-3.)

The number of persons **unemployed for less than 5 weeks** declined by 387,000 in July, mostly offsetting an increase in the prior month. The number of **long-term unemployed** (those jobless for 27 weeks and over), at 6.2 million, changed little over the month and accounted for 44.4 percent of the unemployed. (See table A-12.)

The **civilian labor force participation rate** edged down in July to 63.9 percent, and the **employment-population ratio** was little changed at 58.1 percent. (See table A-1.)

The number of persons employed **part time for economic reasons** (sometimes referred to as involuntary part-time workers) was about unchanged in July at 8.4 million. These individuals were working part time because their hours had been cut back or because they were unable to find a full-time job. (See table A-8.)

In July, 2.8 million persons were **marginally attached to the labor force**, little changed from a year earlier. (These data are not seasonally adjusted.) These individuals were not in the labor force, wanted and were available for work, and had looked for a job sometime in the prior 12 months. They were **not counted as unemployed** because they had not searched for work in the 4 weeks preceding the survey. (See table A-16.)

Among the marginally attached, there were **1.1 million discouraged workers in July**, about the same as a year earlier. (These data are not seasonally adjusted.) Discouraged workers are persons not currently looking for work because they believe no jobs are available for them. The remaining 1.7 million persons marginally attached to the labor force in July had not searched for work in the 4 weeks preceding the survey for reasons such as school attendance or family responsibilities. (See table A-16.)

Establishment Survey Data

Total **nonfarm payroll employment** increased by 117,000 in July, following little growth over the prior 2 months. Total **private employment** rose by 154,000 over the month, reflecting job gains in several major industries, including health care, retail trade, manufacturing, and mining. Government employment continued to decline. (See table B-1.)

Health care employment grew by 31,000 in July. Ambulatory health care services and hospitals each added 14,000 jobs over the month. Over the past 12 months, health care employment has grown by 299,000.

Retail trade added 26,000 jobs in July. Employment in health and personal care stores rose by 9,000 over the month with small increases distributed among several other retail industries. Employment in retail trade has increased by 228,000 since a recent low in December 2009.

Manufacturing employment increased in July (+24,000); nearly all of the increase was in durable goods manufacturing. Within durable goods, the motor vehicles and parts industry had fewer seasonal layoffs than typical for July, contributing to a seasonally adjusted employment increase of 12,000. Manufacturing has added 289,000 jobs since its most recent trough in December 2009, and durable goods manufacturing added 327,000 jobs during this period.

In July, employment in **mining** rose by 9,000; virtually all of the gain (+8,000) occurred in support activities for mining. Employment in mining has increased by 140,000 since a recent low in October 2009.

Employment in **professional and technical services** continued to trend up in July (+18,000). This industry has added 246,000 jobs since a recent low in March 2010. Employment in **temporary help services** changed little over the month and has shown little movement on net so far this year.

Elsewhere in the private sector, employment in **construction, transportation and warehousing, information, financial activities, and leisure and hospitality** changed little over the month.

Government employment continued to trend down over the month (-37,000). Employment in state government decreased by 23,000, almost entirely due to a partial shutdown of the Minnesota state government. Employment in local government continued to wane over the month.

The **average workweek for all employees** on private nonfarm payrolls was unchanged over the month at 34.3 hours. The manufacturing workweek and factory overtime for all employees also were unchanged at 40.3 hours and 3.1 hours, respectively. In July, the average workweek for **production and nonsupervisory employees** on private nonfarm payrolls was 33.6 hours for the sixth consecutive month. (See tables B-2 and B-7.)

In July, **average hourly earnings for all employees** on private nonfarm payrolls increased by 10 cents, or 0.4 percent, to \$23.13. Over the past 12 months, average hourly earnings have increased by 2.3 percent. In July, average hourly earnings of private-sector **production and nonsupervisory employees** increased by 8 cents, or 0.4 percent, to \$19.52. (See tables B-3 and B-8.)

The change in total nonfarm payroll employment for May was revised from +25,000 to +53,000, and the change for June was revised from +18,000 to +46,000.

The Employment Situation for August is scheduled to be released on Friday, September 2, 2011, at 8:30 a.m. (EDT).

HOUSEHOLD DATA

Summary table A. Household data, seasonally adjusted

[Numbers in thousands]

Category	July 2010	May 2011	June 2011	July 2011	Change from: June 2011- July 2011
Employment status					
Civilian noninstitutional population.....	237,890	239,313	239,489	239,671	182
Civilian labor force.....	153,628	153,693	153,421	153,228	-193
Participation rate.....	64.6	64.2	64.1	63.9	-0.2
Employed.....	138,991	139,779	139,334	139,296	-38
Employment-population ratio.....	58.4	58.4	58.2	58.1	-0.1
Unemployed.....	14,637	13,914	14,087	13,931	-156
Unemployment rate.....	9.5	9.1	9.2	9.1	-0.1
Not in labor force.....	84,262	85,620	86,069	86,443	374
Unemployment rates					
Total, 16 years and over.....	9.5	9.1	9.2	9.1	-0.1
Adult men (20 years and over).....	9.7	8.9	9.1	9.0	-0.1
Adult women (20 years and over).....	7.9	8.0	8.0	7.9	-0.1
Teenagers (16 to 19 years).....	26.1	24.2	24.5	25.0	0.5
White.....	8.6	8.0	8.1	8.1	0.0
Black or African American.....	15.7	16.2	16.2	15.9	-0.3
Asian (not seasonally adjusted).....	8.2	7.0	6.8	7.7	-
Hispanic or Latino ethnicity.....	12.1	11.9	11.6	11.3	-0.3
Total, 25 years and over.....	8.1	7.8	8.0	7.8	-0.2
Less than a high school diploma.....	13.9	14.7	14.3	15.0	0.7
High school graduates, no college.....	10.1	9.5	10.0	9.3	-0.7
Some college or associate degree.....	8.4	8.0	8.4	8.3	-0.1
Bachelor's degree and higher.....	4.5	4.5	4.4	4.3	-0.1
Reason for unemployment					
Job losers and persons who completed temporary jobs.....	9,090	8,274	8,261	8,215	-46
Job leavers.....	896	908	965	928	-37
Reentrants.....	3,417	3,433	3,430	3,410	-20
New entrants.....	1,197	1,231	1,222	1,270	48
Duration of unemployment					
Less than 5 weeks.....	2,833	2,664	3,076	2,689	-387
5 to 14 weeks.....	3,098	2,892	2,972	3,088	116
15 to 26 weeks.....	2,171	1,984	1,836	1,965	129
27 weeks and over.....	6,539	6,200	6,289	6,185	-104
Employed persons at work part time					
Part time for economic reasons.....	8,533	8,548	8,552	8,396	-156
Slack work or business conditions.....	6,164	5,834	5,806	5,687	-119
Could only find part-time work.....	2,301	2,473	2,401	2,517	116
Part time for noneconomic reasons.....	18,219	18,468	18,470	18,258	-212
Persons not in the labor force (not seasonally adjusted)					
Marginally attached to the labor force.....	2,622	2,206	2,680	2,785	-
Discouraged workers.....	1,185	822	982	1,119	-

- Over-the-month changes are not displayed for not seasonally adjusted data.

NOTE: Persons whose ethnicity is identified as Hispanic or Latino may be of any race. Detail for the seasonally adjusted data shown in this table will not necessarily add to totals because of the independent seasonal adjustment of the various series. Updated population controls are introduced annually with the release of January data.

ESTABLISHMENT DATA
Summary table B. Establishment data, seasonally adjusted

Category	July 2010	May 2011	June 2011 ^p	July 2011 ^p
EMPLOYMENT BY SELECTED INDUSTRY (Over-the-month change, in thousands)				
Total nonfarm.....	-49	53	46	117
Total private.....	93	99	80	154
Goods-producing.....	28	20	16	42
Mining and logging.....	7	10	10	10
Construction.....	-11	3	-5	8
Manufacturing.....	32	7	11	24
Durable goods ¹	35	18	17	23
Motor vehicles and parts.....	21.3	0.1	2.1	12.0
Nondurable goods.....	-3	-11	-6	1
Private service-providing ¹	65	79	64	112
Wholesale trade.....	3.1	8.2	5.7	1.7
Retail trade.....	10.8	2.8	11.2	25.9
Transportation and warehousing.....	9.0	12.0	12.4	1.1
Information.....	5	0	0	-1
Financial activities.....	-10	13	-18	-4
Professional and business services ¹	-2	44	4	34
Temporary help services.....	-2.8	-1.0	-11.6	0.3
Education and health services ¹	36	21	12	38
Health care and social assistance.....	28.2	26.0	12.6	36.7
Leisure and hospitality.....	-5	-25	33	17
Other services.....	19	3	3	0
Government.....	-142	-46	-34	-37
WOMEN AND PRODUCTION AND NONSUPERVISORY EMPLOYEES AS A PERCENT OF ALL EMPLOYEES ²				
Total nonfarm women employees.....	49.8	49.5	49.5	49.4
Total private women employees.....	48.3	48.0	48.0	47.9
Total private production and nonsupervisory employees.....	82.4	82.4	82.4	82.4
HOURS AND EARNINGS ALL EMPLOYEES				
Total private				
Average weekly hours.....	34.2	34.4	34.3	34.3
Average hourly earnings.....	\$ 22.61	\$ 23.02	\$ 23.03	\$ 23.13
Average weekly earnings.....	\$ 773.26	\$ 791.89	\$ 789.93	\$ 793.36
Index of aggregate weekly hours (2007=100) ³	92.0	93.9	93.7	93.8
Over-the-month percent change.....	0.3	0.1	-0.2	0.1
Index of aggregate weekly payrolls (2007=100) ⁴	99.2	103.1	102.9	103.5
Over-the-month percent change.....	0.5	0.5	-0.2	0.6
HOURS AND EARNINGS PRODUCTION AND NONSUPERVISORY EMPLOYEES				
Total private				
Average weekly hours.....	33.5	33.6	33.6	33.6
Average hourly earnings.....	\$ 19.08	\$ 19.42	\$ 19.44	\$ 19.52
Average weekly earnings.....	\$ 639.18	\$ 652.51	\$ 653.18	\$ 655.87
Index of aggregate weekly hours (2002=100) ³	99.0	100.8	100.8	101.0
Over-the-month percent change.....	0.3	0.1	0.0	0.2
Index of aggregate weekly payrolls (2002=100) ⁴	126.3	130.8	131.0	131.7
Over-the-month percent change.....	0.6	0.4	0.2	0.5
DIFFUSION INDEX (Over 1-month span) ⁵				
Total private.....	56.4	55.4	56.6	58.6
Manufacturing.....	51.9	53.1	54.3	53.1

1 Includes other industries, not shown separately.

2 Data relate to production employees in mining and logging and manufacturing, construction employees in construction, and nonsupervisory employees in the service-providing industries.

3 The indexes of aggregate weekly hours are calculated by dividing the current month's estimates of aggregate hours by the corresponding annual average aggregate hours.

4 The indexes of aggregate weekly payrolls are calculated by dividing the current month's estimates of aggregate weekly payrolls by the corresponding annual average aggregate weekly payrolls.

5 Figures are the percent of industries with employment increasing plus one-half of the industries with unchanged employment, where 50 percent indicates an equal balance between industries with increasing and decreasing employment.

p Preliminary

Frequently Asked Questions about Employment and Unemployment Estimates

Why are there two monthly measures of employment?

The household survey and establishment survey both produce sample-based estimates of employment and both have strengths and limitations. The establishment survey employment series has a smaller margin of error on the measurement of month-to-month change than the household survey because of its much larger sample size. An over-the-month employment change of about 100,000 is statistically significant in the establishment survey, while the threshold for a statistically significant change in the household survey is about 400,000. However, the household survey has a more expansive scope than the establishment survey because it includes the self-employed, unpaid family workers, agricultural workers, and private household workers, who are excluded by the establishment survey. The household survey also provides estimates of employment for demographic groups.

Are undocumented immigrants counted in the surveys?

It is likely that both surveys include at least some undocumented immigrants. However, neither the establishment nor the household survey is designed to identify the legal status of workers. Therefore, it is not possible to determine how many are counted in either survey. The establishment survey does not collect data on the legal status of workers. The household survey does include questions which identify the foreign and native born, but it does not include questions about the legal status of the foreign born.

Why does the establishment survey have revisions?

The establishment survey revises published estimates to improve its data series by incorporating additional information that was not available at the time of the initial publication of the estimates. The establishment survey revises its initial monthly estimates twice, in the immediately succeeding 2 months, to incorporate additional sample receipts from respondents in the survey and recalculated seasonal adjustment factors. For more information on the monthly revisions, please visit www.bls.gov/ces/cesrevinfo.htm.

On an annual basis, the establishment survey incorporates a benchmark revision that re-anchors estimates to nearly complete employment counts available from unemployment insurance tax records. The benchmark helps to control for sampling and modeling errors in the estimates. For more information on the annual benchmark revision, please visit www.bls.gov/web/cesbmart.htm.

Does the establishment survey sample include small firms?

Yes; about 40 percent of the establishment survey sample is comprised of business establishments with fewer than 20 employees. The establishment survey sample is designed to maximize the reliability of the total nonfarm employment estimate; firms from all size classes and industries are appropriately sampled to achieve that goal.

Does the establishment survey account for employment from new businesses?

Yes; monthly establishment survey estimates include an adjustment to account for the net employment change generated by business births and deaths. The adjustment comes from an econometric model that forecasts the monthly net jobs impact of business births and deaths based on the actual past values of the net impact that can be observed with a lag from the Quarterly Census of Employment and Wages. The

establishment survey uses modeling rather than sampling for this purpose because the survey is not immediately able to bring new businesses into the sample. There is an unavoidable lag between the birth of a new firm and its appearance on the sampling frame and availability for selection. BLS adds new businesses to the survey twice a year.

Is the count of unemployed persons limited to just those people receiving unemployment insurance benefits?

No; the estimate of unemployment is based on a monthly sample survey of households. All persons who are without jobs and are actively seeking and available to work are included among the unemployed. (People on temporary layoff are included even if they do not actively seek work.) There is no requirement or question relating to unemployment insurance benefits in the monthly survey.

Does the official unemployment rate exclude people who have stopped looking for work?

Yes; however, there are separate estimates of persons outside the labor force who want a job, including those who have stopped looking because they believe no jobs are available (discouraged workers). In addition, alternative measures of labor underutilization (some of which include discouraged workers and other groups not officially counted as unemployed) are published each month in The Employment Situation news release.

How can unusually severe weather affect employment and hours estimates?

In the establishment survey, the reference period is the pay period that includes the 12th of the month. Unusually severe weather is more likely to have an impact on average weekly hours than on employment. Average weekly hours are estimated for paid time during the pay period, including pay for holidays, sick leave, or other time off. The impact of severe weather on hours estimates typically, but not always, results in a reduction in average weekly hours. For example, some employees may be off work for part of the pay period and not receive pay for the time missed, while some workers, such as those dealing with cleanup or repair, may work extra hours.

In order for severe weather conditions to reduce the estimate of payroll employment, employees have to be off work without pay for the entire pay period. About half of all employees in the payroll survey have a 2-week, semi-monthly, or monthly pay period. Employees who receive pay for any part of the pay period, even 1 hour, are counted in the payroll employment figures. It is not possible to quantify the effect of extreme weather on estimates of employment from the establishment survey.

In the household survey, the reference period is generally the calendar week that includes the 12th of the month. Persons who miss the entire week's work for weather-related events are counted as employed whether or not they are paid for the time off. The household survey collects data on the number of persons who usually work full time but had reduced hours, or had a job but were not at work the entire week, due to bad weather. Current and historical data are available on the household survey's most requested statistics page at <http://data.bls.gov/cgi-bin/surveymost?ln>.

Technical Note

This news release presents statistics from two major surveys, the Current Population Survey (household survey) and the Current Employment Statistics survey (establishment survey). The household survey provides information on the labor force, employment, and unemployment that appears in the "A" tables, marked HOUSEHOLD DATA. It is a sample survey of about 60,000 households conducted by the U.S. Census Bureau for the U.S. Bureau of Labor Statistics (BLS).

The establishment survey provides information on employment, hours, and earnings of employees on nonfarm payrolls; the data appear in the "B" tables, marked ESTABLISHMENT DATA. BLS collects these data each month from the payroll records of a sample of nonagricultural business establishments. The sample includes about 140,000 businesses and government agencies representing approximately 440,000 worksites and is drawn from a sampling frame of roughly 9 million unemployment insurance tax accounts. The active sample includes approximately one-third of all nonfarm payroll employees.

For both surveys, the data for a given month relate to a particular week or pay period. In the household survey, the reference period is generally the calendar week that contains the 12th day of the month. In the establishment survey, the reference period is the pay period including the 12th, which may or may not correspond directly to the calendar week.

Coverage, definitions, and differences between surveys

Household survey. The sample is selected to reflect the entire civilian noninstitutional population. Based on responses to a series of questions on work and job search activities, each person 16 years and over in a sample household is classified as employed, unemployed, or not in the labor force.

People are classified as *employed* if they did any work at all as paid employees during the reference week; worked in their own business, profession, or on their own farm; or worked without pay at least 15 hours in a family business or farm. People are also counted as employed if they were temporarily absent from their jobs because of illness, bad weather, vacation, labor-management disputes, or personal reasons.

People are classified as *unemployed* if they meet all of the following criteria: they had no employment during the reference week; they were available for work at that time; and they made specific efforts to find employment sometime during the 4-week period ending with the reference week. Persons laid off from a job and expecting recall need not be looking for work to be counted as unemployed. The unemployment data derived from the household survey in no way depend upon the eligibility for or receipt of unemployment insurance benefits.

The *civilian labor force* is the sum of employed and

unemployed persons. Those not classified as employed or unemployed are *not in the labor force*. The *unemployment rate* is the number unemployed as a percent of the labor force. The *labor force participation rate* is the labor force as a percent of the population, and the *employment-population ratio* is the employed as a percent of the population. Additional information about the household survey can be found at www.bls.gov/cps/documentation.htm.

Establishment survey. The sample establishments are drawn from private nonfarm businesses such as factories, offices, and stores, as well as from federal, state, and local government entities. *Employees on nonfarm payrolls* are those who received pay for any part of the reference pay period, including persons on paid leave. Persons are counted in each job they hold. *Hours and earnings* data are produced for the private sector for all employees and for production and nonsupervisory employees. *Production and nonsupervisory employees* are defined as production and related employees in manufacturing and mining and logging, construction workers in construction, and non-supervisory employees in private service-providing industries.

Industries are classified on the basis of an establishment's principal activity in accordance with the 2007 version of the North American Industry Classification System. Additional information about the establishment survey can be found at www.bls.gov/ces/#technical.

Differences in employment estimates. The numerous conceptual and methodological differences between the household and establishment surveys result in important distinctions in the employment estimates derived from the surveys. Among these are:

- The household survey includes agricultural workers, the self-employed, unpaid family workers, and private household workers among the employed. These groups are excluded from the establishment survey.
- The household survey includes people on unpaid leave among the employed. The establishment survey does not.
- The household survey is limited to workers 16 years of age and older. The establishment survey is not limited by age.
- The household survey has no duplication of individuals, because individuals are counted only once, even if they hold more than one job. In the establishment survey, employees working at more than one job and thus appearing on more than one payroll are counted separately for each appearance.

Seasonal adjustment

Over the course of a year, the size of the nation's labor force and the levels of employment and unemployment undergo regularly occurring fluctuations. These events may result from seasonal changes in weather, major holidays, and the opening and closing of schools. The effect of such seasonal variation can be very large.

Because these seasonal events follow a more or less regular pattern each year, their influence on the level of a series can be tempered by adjusting for regular seasonal variation. These adjustments make nonseasonal developments, such as declines in employment or increases in the participation of women in the labor force, easier to spot. For example, in the household survey, the large number of youth entering the labor force each June is likely to obscure any other changes that have taken place relative to May, making it difficult to determine if the level of economic activity has risen or declined. Similarly, in the establishment survey, payroll employment in education declines by about 20 percent at the end of the spring term and later rises with the start of the fall term, obscuring the underlying employment trends in the industry. Because seasonal employment changes at the end and beginning of the school year can be estimated, the statistics can be adjusted to make underlying employment patterns more discernable. The seasonally adjusted figures provide a more useful tool with which to analyze changes in month-to-month economic activity.

Many seasonally adjusted series are independently adjusted in both the household and establishment surveys. However, the adjusted series for many major estimates, such as total payroll employment, employment in most major sectors, total employment, and unemployment are computed by aggregating independently adjusted component series. For example, total unemployment is derived by summing the adjusted series for four major age-sex components; this differs from the unemployment estimate that would be obtained by directly adjusting the total or by combining the duration, reasons, or more detailed age categories.

For both the household and establishment surveys, a concurrent seasonal adjustment methodology is used in which new seasonal factors are calculated each month using all relevant data, up to and including the data for the current month. In the household survey, new seasonal factors are used to adjust only the current month's data. In the establishment survey, however, new seasonal factors are used each month to adjust the three most recent monthly estimates. The prior 2 months are routinely revised to incorporate additional sample reports and recalculated seasonal adjustment factors. In both surveys, 5-year revisions to historical data are made once a year.

Reliability of the estimates

Statistics based on the household and establishment surveys are subject to both sampling and nonsampling error. When a sample rather than the entire population is

surveyed, there is a chance that the sample estimates may differ from the "true" population values they represent. The exact difference, or *sampling error*, varies depending on the particular sample selected, and this variability is measured by the standard error of the estimate. There is about a 90-percent chance, or level of confidence, that an estimate based on a sample will differ by no more than 1.6 standard errors from the "true" population value because of sampling error. BLS analyses are generally conducted at the 90-percent level of confidence.

For example, the confidence interval for the monthly change in total nonfarm employment from the establishment survey is on the order of plus or minus 100,000. Suppose the estimate of nonfarm employment increases by 50,000 from one month to the next. The 90-percent confidence interval on the monthly change would range from -50,000 to +150,000 (50,000 +/- 100,000). These figures do not mean that the sample results are off by these magnitudes, but rather that there is about a 90-percent chance that the "true" over-the-month change lies within this interval. Since this range includes values of less than zero, we could not say with confidence that nonfarm employment had, in fact, increased that month. If, however, the reported nonfarm employment rise was 250,000, then all of the values within the 90-percent confidence interval would be greater than zero. In this case, it is likely (at least a 90-percent chance) that nonfarm employment had, in fact, risen that month. At an unemployment rate of around 5.5 percent, the 90-percent confidence interval for the monthly change in unemployment as measured by the household survey is about +/- 280,000, and for the monthly change in the unemployment rate it is about +/- 0.19 percentage point.

In general, estimates involving many individuals or establishments have lower standard errors (relative to the size of the estimate) than estimates which are based on a small number of observations. The precision of estimates also is improved when the data are cumulated over time, such as for quarterly and annual averages.

The household and establishment surveys are also affected by *nonsampling error*, which can occur for many reasons, including the failure to sample a segment of the population, inability to obtain information for all respondents in the sample, inability or unwillingness of respondents to provide correct information on a timely basis, mistakes made by respondents, and errors made in the collection or processing of the data.

For example, in the establishment survey, estimates for the most recent 2 months are based on incomplete returns; for this reason, these estimates are labeled preliminary in the tables. It is only after two successive revisions to a monthly estimate, when nearly all sample reports have been received, that the estimate is considered final.

Another major source of nonsampling error in the establishment survey is the inability to capture, on a timely basis, employment generated by new firms. To correct for this systematic underestimation of employment growth, an estimation procedure with two components is used to account for business births. The first component excludes

employment losses from business deaths from sample-based estimation in order to offset the missing employment gains from business births. This is incorporated into the sample-based estimation procedure by simply not reflecting sample units going out of business, but imputing to them the same employment trend as the other firms in the sample. This procedure accounts for most of the net birth/death employment.

The second component is an ARIMA time series model designed to estimate the residual net birth/death employment not accounted for by the imputation. The historical time series used to create and test the ARIMA model was derived from the unemployment insurance universe micro-level database, and reflects the actual residual net of births and deaths over the past 5 years.

The sample-based estimates from the establishment survey are adjusted once a year (on a lagged basis) to

universe counts of payroll employment obtained from administrative records of the unemployment insurance program. The difference between the March sample-based employment estimates and the March universe counts is known as a benchmark revision, and serves as a rough proxy for total survey error. The new benchmarks also incorporate changes in the classification of industries. Over the past decade, absolute benchmark revisions for total nonfarm employment have averaged 0.3 percent, with a range from -0.7 to 0.6 percent.

Other information

Information in this release will be made available to sensory impaired individuals upon request. Voice phone: (202) 691-5200; Federal Relay Service: (800) 877-8339.

HOUSEHOLD DATA

Table A-1. Employment status of the civilian population by sex and age

[Numbers in thousands]

Employment status, sex, and age	Not seasonally adjusted			Seasonally adjusted ¹					
	July 2010	June 2011	July 2011	July 2010	Mar. 2011	Apr. 2011	May 2011	June 2011	July 2011
TOTAL									
Civilian noninstitutional population.....	237,890	239,489	239,671	237,890	239,000	239,146	239,313	239,489	239,671
Civilian labor force.....	155,270	154,538	154,812	153,628	153,406	153,421	153,693	153,421	153,228
Participation rate.....	65.3	64.5	64.6	64.6	64.2	64.2	64.2	64.1	63.9
Employed.....	140,134	140,129	140,384	138,991	139,864	139,674	139,779	139,334	139,296
Employment-population ratio.....	58.9	58.5	58.6	58.4	58.5	58.4	58.4	58.2	58.1
Unemployed.....	15,137	14,409	14,428	14,637	13,542	13,747	13,914	14,087	13,931
Unemployment rate.....	9.7	9.3	9.3	9.5	8.8	9.0	9.1	9.2	9.1
Not in labor force.....	82,620	84,951	84,859	84,262	85,594	85,725	85,620	86,069	86,443
Persons who currently want a job.....	6,143	7,124	6,810	5,932	6,509	6,539	6,227	6,537	6,575
Men, 16 years and over									
Civilian noninstitutional population.....	115,207	116,250	116,347	115,207	115,988	116,067	116,156	116,250	116,347
Civilian labor force.....	83,071	82,757	82,871	81,986	81,674	81,684	81,989	81,966	81,751
Participation rate.....	72.1	71.2	71.2	71.2	70.4	70.4	70.6	70.5	70.3
Employed.....	74,749	74,848	75,208	73,466	74,108	73,973	74,177	74,014	73,908
Employment-population ratio.....	64.9	64.4	64.6	63.8	63.9	63.7	63.9	63.7	63.5
Unemployed.....	8,323	7,910	7,664	8,520	7,566	7,712	7,811	7,952	7,844
Unemployment rate.....	10.0	9.6	9.2	10.4	9.3	9.4	9.5	9.7	9.6
Not in labor force.....	32,135	33,493	33,476	33,221	34,313	34,382	34,168	34,284	34,596
Men, 20 years and over									
Civilian noninstitutional population.....	106,641	107,668	107,773	106,641	107,381	107,469	107,566	107,668	107,773
Civilian labor force.....	79,356	79,324	79,322	78,993	78,764	78,856	79,193	79,104	78,906
Participation rate.....	74.4	73.7	73.6	74.1	73.4	73.4	73.6	73.5	73.2
Employed.....	72,068	72,427	72,588	71,340	71,959	71,939	72,137	71,937	71,836
Employment-population ratio.....	67.6	67.3	67.4	66.9	67.0	66.9	67.1	66.8	66.7
Unemployed.....	7,287	6,897	6,734	7,653	6,805	6,917	7,056	7,167	7,070
Unemployment rate.....	9.2	8.7	8.5	9.7	8.6	8.8	8.9	9.1	9.0
Not in labor force.....	27,286	28,344	28,451	27,648	28,617	28,612	28,373	28,564	28,867
Women, 16 years and over									
Civilian noninstitutional population.....	122,683	123,239	123,324	122,683	123,012	123,079	123,157	123,239	123,324
Civilian labor force.....	72,199	71,781	71,941	71,642	71,732	71,737	71,704	71,455	71,476
Participation rate.....	58.8	58.2	58.3	58.4	58.3	58.3	58.2	58.0	58.0
Employed.....	65,385	65,282	65,176	65,526	65,756	65,702	65,602	65,320	65,388
Employment-population ratio.....	53.3	53.0	52.8	53.4	53.5	53.4	53.3	53.0	53.0
Unemployed.....	6,814	6,499	6,764	6,117	5,976	6,035	6,102	6,134	6,088
Unemployment rate.....	9.4	9.1	9.4	8.5	8.3	8.4	8.5	8.6	8.5
Not in labor force.....	50,484	51,458	51,383	51,041	51,280	51,342	51,453	51,784	51,847
Women, 20 years and over									
Civilian noninstitutional population.....	114,372	115,045	115,138	114,372	114,792	114,868	114,954	115,045	115,138
Civilian labor force.....	68,717	68,459	68,512	68,797	68,898	68,896	68,908	68,618	68,666
Participation rate.....	60.1	59.5	59.5	60.2	60.0	60.0	59.9	59.6	59.6
Employed.....	62,775	62,811	62,603	63,340	63,566	63,479	63,402	63,098	63,216
Employment-population ratio.....	54.9	54.6	54.4	55.4	55.4	55.3	55.2	54.8	54.9
Unemployed.....	5,942	5,648	5,909	5,458	5,332	5,417	5,505	5,520	5,450
Unemployment rate.....	8.6	8.2	8.6	7.9	7.7	7.9	8.0	8.0	7.9
Not in labor force.....	45,654	46,586	46,626	45,575	45,894	45,972	46,047	46,427	46,472
Both sexes, 16 to 19 years									
Civilian noninstitutional population.....	16,877	16,776	16,760	16,877	16,827	16,809	16,792	16,776	16,760
Civilian labor force.....	7,197	6,755	6,978	5,838	5,744	5,669	5,592	5,698	5,656
Participation rate.....	42.6	40.3	41.6	34.6	34.1	33.7	33.3	34.0	33.7
Employed.....	5,290	4,891	5,193	4,312	4,339	4,255	4,240	4,299	4,244
Employment-population ratio.....	31.3	29.2	31.0	25.5	25.8	25.3	25.2	25.6	25.3
Unemployed.....	1,907	1,864	1,785	1,526	1,405	1,413	1,352	1,399	1,412
Unemployment rate.....	26.5	27.6	25.6	26.1	24.5	24.9	24.2	24.5	25.0
Not in labor force.....	9,679	10,021	9,782	11,039	11,083	11,140	11,201	11,078	11,104

¹ The population figures are not adjusted for seasonal variation; therefore, identical numbers appear in the unadjusted and seasonally adjusted columns.

NOTE: Updated population controls are introduced annually with the release of January data.

HOUSEHOLD DATA

Table A-2. Employment status of the civilian population by race, sex, and age

[Numbers in thousands]

Employment status, race, sex, and age	Not seasonally adjusted			Seasonally adjusted ¹					
	July 2010	June 2011	July 2011	July 2010	Mar. 2011	Apr. 2011	May 2011	June 2011	July 2011
WHITE									
Civilian noninstitutional population.....	192,109	192,989	193,106	192,109	192,688	192,771	192,877	192,989	193,106
Civilian labor force.....	126,152	125,335	125,659	125,094	124,497	124,650	124,811	124,493	124,503
Participation rate.....	65.7	64.9	65.1	65.1	64.6	64.7	64.7	64.5	64.5
Employed.....	115,183	114,995	115,350	114,312	114,706	114,652	114,785	114,358	114,420
Employment-population ratio.....	60.0	59.6	59.7	59.5	59.5	59.5	59.5	59.3	59.3
Unemployed.....	10,969	10,340	10,309	10,782	9,791	9,998	10,026	10,135	10,083
Unemployment rate.....	8.7	8.2	8.2	8.6	7.9	8.0	8.0	8.1	8.1
Not in labor force.....	65,957	67,654	67,448	67,016	68,191	68,122	68,066	68,496	68,603
Men, 20 years and over									
Civilian labor force.....	65,603	65,360	65,396	65,418	64,864	65,032	65,335	65,203	65,099
Participation rate.....	74.9	74.2	74.1	74.7	73.7	73.9	74.2	74.0	73.8
Employed.....	60,213	60,355	60,555	59,651	59,850	59,903	60,168	59,943	59,929
Employment-population ratio.....	68.8	68.5	68.6	68.1	68.0	68.1	68.3	68.0	67.9
Unemployed.....	5,389	5,005	4,841	5,767	5,014	5,129	5,167	5,261	5,170
Unemployment rate.....	8.2	7.7	7.4	8.8	7.7	7.9	7.9	8.1	7.9
Women, 20 years and over									
Civilian labor force.....	54,634	54,429	54,464	54,839	54,950	54,971	54,912	54,633	54,696
Participation rate.....	59.6	59.1	59.1	59.8	59.8	59.8	59.7	59.4	59.4
Employed.....	50,429	50,471	50,345	50,955	51,184	51,138	50,999	50,775	50,866
Employment-population ratio.....	55.0	54.8	54.7	55.6	55.7	55.6	55.5	55.2	55.2
Unemployed.....	4,205	3,958	4,119	3,883	3,766	3,833	3,914	3,858	3,830
Unemployment rate.....	7.7	7.3	7.6	7.1	6.9	7.0	7.1	7.1	7.0
Both sexes, 16 to 19 years									
Civilian labor force.....	5,915	5,546	5,798	4,837	4,683	4,646	4,563	4,657	4,708
Participation rate.....	46.0	43.3	45.3	37.6	36.4	36.2	35.6	36.3	36.8
Employed.....	4,540	4,168	4,450	3,706	3,672	3,610	3,619	3,640	3,625
Employment-population ratio.....	35.3	32.5	34.7	28.8	28.6	28.1	28.2	28.4	28.3
Unemployed.....	1,375	1,377	1,348	1,131	1,011	1,036	945	1,017	1,083
Unemployment rate.....	23.2	24.8	23.3	23.4	21.6	22.3	20.7	21.8	23.0
BLACK OR AFRICAN AMERICAN									
Civilian noninstitutional population.....	28,718	29,093	29,123	28,718	29,005	29,035	29,063	29,093	29,123
Civilian labor force.....	18,066	17,966	17,895	17,676	17,836	17,849	17,750	17,733	17,582
Participation rate.....	62.9	61.8	61.4	61.5	61.5	61.5	61.1	61.0	60.4
Employed.....	15,059	14,993	14,890	14,908	15,067	14,966	14,870	14,855	14,786
Employment-population ratio.....	52.4	51.5	51.1	51.9	51.9	51.5	51.2	51.1	50.8
Unemployed.....	3,007	2,972	3,004	2,767	2,769	2,882	2,880	2,877	2,796
Unemployment rate.....	16.6	16.5	16.8	15.7	15.5	16.1	16.2	16.2	15.9
Not in labor force.....	10,652	11,127	11,229	11,043	11,169	11,186	11,313	11,360	11,541
Men, 20 years and over									
Civilian labor force.....	8,088	8,155	8,105	8,008	8,119	8,113	8,056	8,111	8,044
Participation rate.....	69.5	68.7	68.2	68.8	68.7	68.6	68.0	68.3	67.7
Employed.....	6,749	6,793	6,748	6,669	6,758	6,731	6,645	6,736	6,680
Employment-population ratio.....	58.0	57.2	56.8	57.3	57.2	56.9	56.1	56.7	56.2
Unemployed.....	1,339	1,362	1,357	1,339	1,361	1,382	1,411	1,375	1,364
Unemployment rate.....	16.6	16.7	16.7	16.7	16.8	17.0	17.5	17.0	17.0
Women, 20 years and over									
Civilian labor force.....	9,161	9,011	9,050	9,026	9,050	9,054	9,056	8,953	8,945
Participation rate.....	63.5	61.6	61.8	62.5	62.1	62.0	62.0	61.2	61.1
Employed.....	7,854	7,760	7,709	7,863	7,923	7,836	7,847	7,718	7,745
Employment-population ratio.....	54.4	53.1	52.6	54.5	54.4	53.7	53.7	52.8	52.9
Unemployed.....	1,307	1,251	1,341	1,164	1,127	1,217	1,210	1,235	1,200
Unemployment rate.....	14.3	13.9	14.8	12.9	12.5	13.4	13.4	13.8	13.4
Both sexes, 16 to 19 years									
Civilian labor force.....	817	799	740	641	668	682	638	669	594
Participation rate.....	30.8	30.8	28.5	24.2	25.6	26.2	24.5	25.8	22.9
Employed.....	456	440	433	376	387	398	378	402	361
Employment-population ratio.....	17.2	16.9	16.7	14.2	14.8	15.3	14.5	15.5	13.9
Unemployed.....	361	360	306	265	281	284	260	267	233
Unemployment rate.....	44.2	45.0	41.4	41.3	42.1	41.6	40.7	39.9	39.2
ASIAN									
Civilian noninstitutional population.....	11,200	11,379	11,410	-	-	-	-	-	-

See footnotes at end of table.

HOUSEHOLD DATA

Table A-2. Employment status of the civilian population by race, sex, and age — Continued

[Numbers in thousands]

Employment status, race, sex, and age	Not seasonally adjusted			Seasonally adjusted ¹					
	July 2010	June 2011	July 2011	July 2010	Mar. 2011	Apr. 2011	May 2011	June 2011	July 2011
Civilian labor force.....	7,342	7,384	7,405	-	-	-	-	-	-
Participation rate.....	65.6	64.9	64.9	-	-	-	-	-	-
Employed.....	6,742	6,881	6,838	-	-	-	-	-	-
Employment-population ratio.....	60.2	60.5	59.9	-	-	-	-	-	-
Unemployed.....	601	504	568	-	-	-	-	-	-
Unemployment rate.....	8.2	6.8	7.7	-	-	-	-	-	-
Not in labor force.....	3,857	3,995	4,004	-	-	-	-	-	-

¹ The population figures are not adjusted for seasonal variation; therefore, identical numbers appear in the unadjusted and seasonally adjusted columns.

- Data not available.

NOTE: Estimates for the above race groups will not sum to totals shown in table A-1 because data are not presented for all races. Updated population controls are introduced annually with the release of January data.

HOUSEHOLD DATA

Table A-3. Employment status of the Hispanic or Latino population by sex and age

[Numbers in thousands]

Employment status, sex, and age	Not seasonally adjusted			Seasonally adjusted ¹					
	July 2010	June 2011	July 2011	July 2010	Mar. 2011	Apr. 2011	May 2011	June 2011	July 2011
HISPANIC OR LATINO ETHNICITY									
Civilian noninstitutional population.....	33,747	34,391	34,470	33,747	34,155	34,233	34,311	34,391	34,470
Civilian labor force.....	22,908	22,884	22,920	22,737	22,676	22,798	22,739	22,816	22,741
Participation rate.....	67.9	66.5	66.5	67.4	66.4	66.6	66.3	66.3	66.0
Employed.....	20,110	20,241	20,325	19,980	20,105	20,110	20,025	20,164	20,171
Employment-population ratio.....	59.6	58.9	59.0	59.2	58.9	58.7	58.4	58.6	58.5
Unemployed.....	2,798	2,643	2,596	2,757	2,571	2,688	2,715	2,653	2,570
Unemployment rate.....	12.2	11.5	11.3	12.1	11.3	11.8	11.9	11.6	11.3
Not in labor force.....	10,839	11,507	11,549	11,010	11,479	11,435	11,571	11,574	11,728
Men, 20 years and over									
Civilian labor force.....	13,065	13,004	13,088	-	-	-	-	-	-
Participation rate.....	83.2	81.7	82.0	-	-	-	-	-	-
Employed.....	11,735	11,731	11,882	-	-	-	-	-	-
Employment-population ratio.....	74.7	73.7	74.5	-	-	-	-	-	-
Unemployed.....	1,330	1,273	1,206	-	-	-	-	-	-
Unemployment rate.....	10.2	9.8	9.2	-	-	-	-	-	-
Women, 20 years and over									
Civilian labor force.....	8,650	8,861	8,722	-	-	-	-	-	-
Participation rate.....	58.5	58.8	57.8	-	-	-	-	-	-
Employed.....	7,599	7,852	7,735	-	-	-	-	-	-
Employment-population ratio.....	51.4	52.1	51.2	-	-	-	-	-	-
Unemployed.....	1,050	1,010	987	-	-	-	-	-	-
Unemployment rate.....	12.1	11.4	11.3	-	-	-	-	-	-
Both sexes, 16 to 19 years									
Civilian labor force.....	1,193	1,018	1,110	-	-	-	-	-	-
Participation rate.....	36.8	29.9	32.6	-	-	-	-	-	-
Employed.....	775	658	708	-	-	-	-	-	-
Employment-population ratio.....	23.9	19.3	20.8	-	-	-	-	-	-
Unemployed.....	418	360	402	-	-	-	-	-	-
Unemployment rate.....	35.0	35.4	36.2	-	-	-	-	-	-

¹ The population figures are not adjusted for seasonal variation; therefore, identical numbers appear in the unadjusted and seasonally adjusted columns.

- Data not available.

NOTE: Persons whose ethnicity is identified as Hispanic or Latino may be of any race. Updated population controls are introduced annually with the release of January data.

HOUSEHOLD DATA

Table A-4. Employment status of the civilian population 25 years and over by educational attainment

[Numbers in thousands]

Educational attainment	Not seasonally adjusted			Seasonally adjusted					
	July 2010	June 2011	July 2011	July 2010	Mar. 2011	Apr. 2011	May 2011	June 2011	July 2011
Less than a high school diploma									
Civilian labor force.....	11,823	11,672	11,629	12,013	11,652	11,567	11,442	11,392	11,704
Participation rate.....	46.4	46.1	46.6	47.2	46.1	45.5	45.1	45.0	46.9
Employed.....	10,286	10,141	9,988	10,345	10,059	9,876	9,757	9,768	9,952
Employment-population ratio.....	40.4	40.0	40.0	40.6	39.8	38.9	38.5	38.6	39.9
Unemployed.....	1,538	1,531	1,641	1,668	1,593	1,691	1,685	1,624	1,752
Unemployment rate.....	13.0	13.1	14.1	13.9	13.7	14.6	14.7	14.3	15.0
High school graduates, no college¹									
Civilian labor force.....	37,583	37,351	37,113	37,977	37,171	37,506	37,653	37,612	37,505
Participation rate.....	61.0	60.2	59.9	61.6	60.0	60.4	60.4	60.6	60.6
Employed.....	33,844	33,813	33,750	34,155	33,654	33,881	34,072	33,836	34,006
Employment-population ratio.....	54.9	54.5	54.5	55.4	54.4	54.6	54.6	54.5	54.9
Unemployed.....	3,739	3,538	3,364	3,822	3,517	3,626	3,581	3,775	3,499
Unemployment rate.....	9.9	9.5	9.1	10.1	9.5	9.7	9.5	10.0	9.3
Some college or associate degree									
Civilian labor force.....	36,884	36,454	36,706	36,792	36,653	36,637	36,780	36,786	36,686
Participation rate.....	70.3	69.2	68.9	70.1	69.7	69.7	69.7	69.8	68.9
Employed.....	33,715	33,406	33,579	33,711	33,938	33,907	33,852	33,708	33,657
Employment-population ratio.....	64.3	63.4	63.0	64.3	64.6	64.5	64.1	63.9	63.2
Unemployed.....	3,169	3,048	3,128	3,081	2,715	2,730	2,928	3,079	3,028
Unemployment rate.....	8.6	8.4	8.5	8.4	7.4	7.5	8.0	8.4	8.3
Bachelor's degree and higher²									
Civilian labor force.....	46,042	46,633	46,621	45,980	46,919	46,897	46,925	46,963	46,680
Participation rate.....	76.2	76.2	76.0	76.1	76.9	77.0	77.5	76.8	76.1
Employed.....	43,725	44,590	44,435	43,888	44,843	44,789	44,807	44,894	44,677
Employment-population ratio.....	72.4	72.9	72.5	72.7	73.5	73.5	74.0	73.4	72.9
Unemployed.....	2,317	2,044	2,186	2,092	2,076	2,109	2,118	2,069	2,003
Unemployment rate.....	5.0	4.4	4.7	4.5	4.4	4.5	4.5	4.4	4.3

1 Includes persons with a high school diploma or equivalent.

2 Includes persons with bachelor's, master's, professional, and doctoral degrees.

NOTE: Updated population controls are introduced annually with the release of January data.

HOUSEHOLD DATA

Table A-5. Employment status of the civilian population 18 years and over by veteran status, period of service, and sex, not seasonally adjusted

[Numbers in thousands]

Employment status, veteran status, and period of service	Total		Men		Women	
	July 2010	July 2011	July 2010	July 2011	July 2010	July 2011
VETERANS, 18 years and over						
Civilian noninstitutional population.....	21,997	21,596	20,210	19,794	1,787	1,802
Civilian labor force.....	11,857	11,387	10,739	10,324	1,118	1,063
Participation rate.....	53.9	52.7	53.1	52.2	62.6	59.0
Employed.....	10,863	10,412	9,809	9,459	1,053	953
Employment-population ratio.....	49.4	48.2	48.5	47.8	58.9	52.9
Unemployed.....	994	975	930	865	65	110
Unemployment rate.....	8.4	8.6	8.7	8.4	5.8	10.3
Not in labor force.....	10,140	10,209	9,471	9,470	669	739
 Gulf War-era II veterans						
Civilian noninstitutional population.....	2,161	2,339	1,758	1,937	402	402
Civilian labor force.....	1,824	1,878	1,529	1,615	295	262
Participation rate.....	84.4	80.3	87.0	83.4	73.3	65.3
Employed.....	1,609	1,645	1,346	1,420	262	226
Employment-population ratio.....	74.5	70.3	76.6	73.3	65.2	56.1
Unemployed.....	215	232	183	195	32	37
Unemployment rate.....	11.8	12.4	12.0	12.1	11.0	14.1
Not in labor force.....	336	461	229	322	108	139
 Gulf War-era I veterans						
Civilian noninstitutional population.....	2,897	2,947	2,441	2,457	456	490
Civilian labor force.....	2,473	2,456	2,125	2,096	349	359
Participation rate.....	85.4	83.3	87.1	85.3	76.4	73.3
Employed.....	2,293	2,265	1,969	1,939	325	326
Employment-population ratio.....	79.2	76.9	80.7	78.9	71.1	66.6
Unemployed.....	180	191	156	158	24	33
Unemployment rate.....	7.3	7.8	7.3	7.5	6.9	9.2
Not in labor force.....	423	492	316	361	108	131
 World War II, Korean War, and Vietnam-era veterans						
Civilian noninstitutional population.....	10,971	10,426	10,596	10,088	375	338
Civilian labor force.....	3,985	3,620	3,879	3,528	106	92
Participation rate.....	36.3	34.7	36.6	35.0	28.3	27.2
Employed.....	3,654	3,328	3,551	3,242	104	86
Employment-population ratio.....	33.3	31.9	33.5	32.1	27.6	25.3
Unemployed.....	331	292	328	286	2	6
Unemployment rate.....	8.3	8.1	8.5	8.1	2.2	6.7
Not in labor force.....	6,986	6,806	6,717	6,560	269	246
 Veterans of other service periods						
Civilian noninstitutional population.....	5,968	5,884	5,415	5,312	553	573
Civilian labor force.....	3,574	3,434	3,206	3,085	368	349
Participation rate.....	59.9	58.4	59.2	58.1	66.6	61.0
Employed.....	3,306	3,174	2,943	2,859	363	316
Employment-population ratio.....	55.4	53.9	54.4	53.8	65.5	55.1
Unemployed.....	268	260	262	226	6	34
Unemployment rate.....	7.5	7.6	8.2	7.3	1.6	9.6
Not in labor force.....	2,394	2,450	2,209	2,227	185	223
NONVETERANS, 18 years and over						
Civilian noninstitutional population.....	207,265	209,487	90,554	92,092	116,712	117,395
Civilian labor force.....	140,908	140,959	70,999	71,285	69,908	69,674
Participation rate.....	68.0	67.3	78.4	77.4	59.9	59.3
Employed.....	127,573	128,257	64,035	64,860	63,538	63,397
Employment-population ratio.....	61.6	61.2	70.7	70.4	54.4	54.0
Unemployed.....	13,335	12,702	6,965	6,425	6,371	6,277
Unemployment rate.....	9.5	9.0	9.8	9.0	9.1	9.0
Not in labor force.....	66,357	68,528	19,554	20,806	46,803	47,721

NOTE: Veterans served on active duty in the U.S. Armed Forces and were not on active duty at the time of the survey. Nonveterans never served on active duty in the U.S. Armed Forces. Veterans could have served anywhere in the world during these periods of service: Gulf War era II (September 2001-present), Gulf War era I (August 1990-August 2001), Vietnam era (August 1964-April 1975), Korean War (July 1950-January 1955), World War II (December 1941-December 1946), and other service periods (all other time periods). Veterans who served in more than one wartime period are classified only in the most recent one. Veterans who served during one of the selected wartime periods and another period are classified only in the wartime period. Updated population controls are introduced annually with the release of January data.

HOUSEHOLD DATA

Table A-6. Employment status of the civilian population by sex, age, and disability status, not seasonally adjusted

[Numbers in thousands]

Employment status, sex, and age	Persons with a disability		Persons with no disability	
	July 2010	July 2011	July 2010	July 2011
TOTAL, 16 years and over				
Civilian noninstitutional population.....	26,000	27,278	211,890	212,393
Civilian labor force.....	5,603	5,773	149,668	149,039
Participation rate.....	21.5	21.2	70.6	70.2
Employed.....	4,684	4,802	135,450	135,581
Employment-population ratio.....	18.0	17.6	63.9	63.8
Unemployed.....	919	970	14,218	13,458
Unemployment rate.....	16.4	16.8	9.5	9.0
Not in labor force.....	20,397	21,505	62,223	63,354
Men, 16 to 64 years				
Civilian labor force.....	2,606	2,687	76,808	76,208
Participation rate.....	36.2	36.2	84.2	83.3
Employed.....	2,167	2,215	69,198	69,266
Employment-population ratio.....	30.1	29.9	75.8	75.7
Unemployed.....	439	472	7,609	6,942
Unemployment rate.....	16.8	17.6	9.9	9.1
Not in labor force.....	4,602	4,734	14,432	15,270
Women, 16 to 64 years				
Civilian labor force.....	2,192	2,232	67,036	66,685
Participation rate.....	30.3	29.7	71.7	71.2
Employed.....	1,801	1,816	60,827	60,555
Employment-population ratio.....	24.9	24.2	65.1	64.7
Unemployed.....	391	416	6,210	6,129
Unemployment rate.....	17.8	18.6	9.3	9.2
Not in labor force.....	5,046	5,272	26,460	26,949
Both sexes, 65 years and over				
Civilian labor force.....	805	854	5,824	6,147
Participation rate.....	7.0	6.9	21.4	22.5
Employed.....	716	771	5,425	5,761
Employment-population ratio.....	6.2	6.2	20.0	21.1
Unemployed.....	89	83	399	386
Unemployment rate.....	11.1	9.7	6.8	6.3
Not in labor force.....	10,749	11,499	21,331	21,135

NOTE: A person with a disability has at least one of the following conditions: is deaf or has serious difficulty hearing; is blind or has serious difficulty seeing even when wearing glasses; has serious difficulty concentrating, remembering, or making decisions because of a physical, mental, or emotional condition; has serious difficulty walking or climbing stairs; has difficulty dressing or bathing; or has difficulty doing errands alone such as visiting a doctor's office or shopping because of a physical, mental, or emotional condition. Updated population controls are introduced annually with the release of January data.

HOUSEHOLD DATA

Table A-7. Employment status of the civilian population by nativity and sex, not seasonally adjusted

[Numbers in thousands]

Employment status and nativity	Total		Men		Women	
	July 2010	July 2011	July 2010	July 2011	July 2010	July 2011
Foreign born, 16 years and over						
Civilian noninstitutional population.....	36,207	36,576	18,266	18,247	17,942	18,328
Civilian labor force.....	24,586	24,516	14,746	14,575	9,841	9,941
Participation rate.....	67.9	67.0	80.7	79.9	54.8	54.2
Employed.....	22,249	22,264	13,340	13,291	8,909	8,973
Employment-population ratio.....	61.5	60.9	73.0	72.8	49.7	49.0
Unemployed.....	2,337	2,252	1,405	1,284	932	968
Unemployment rate.....	9.5	9.2	9.5	8.8	9.5	9.7
Not in labor force.....	11,621	12,060	3,520	3,673	8,101	8,387
Native born, 16 years and over						
Civilian noninstitutional population.....	201,683	203,095	96,941	98,100	104,741	104,996
Civilian labor force.....	130,684	130,296	68,326	68,297	62,358	61,999
Participation rate.....	64.8	64.2	70.5	69.6	59.5	59.0
Employed.....	117,884	118,120	61,408	61,917	56,476	56,203
Employment-population ratio.....	58.5	58.2	63.3	63.1	53.9	53.5
Unemployed.....	12,800	12,176	6,918	6,380	5,882	5,796
Unemployment rate.....	9.8	9.3	10.1	9.3	9.4	9.3
Not in labor force.....	70,999	72,799	28,615	29,803	42,384	42,996

NOTE: The foreign born are those residing in the United States who were not U.S. citizens at birth. That is, they were born outside the United States or one of its outlying areas such as Puerto Rico or Guam, to parents neither of whom was a U.S. citizen. The native born are persons who were born in the United States or one of its outlying areas such as Puerto Rico or Guam or who were born abroad of at least one parent who was a U.S. citizen. Updated population controls are introduced annually with the release of January data.

HOUSEHOLD DATA

Table A-8. Employed persons by class of worker and part-time status

[In thousands]

Category	Not seasonally adjusted			Seasonally adjusted					
	July 2010	June 2011	July 2011	July 2010	Mar. 2011	Apr. 2011	May 2011	June 2011	July 2011
CLASS OF WORKER									
Agriculture and related industries.....	2,416	2,419	2,484	2,189	2,251	2,087	2,243	2,217	2,245
Wage and salary workers ¹	1,485	1,507	1,596	1,328	1,423	1,245	1,391	1,383	1,419
Self-employed workers, unincorporated.....	884	875	867	825	835	818	822	829	810
Unpaid family workers.....	47	36	21	-	-	-	-	-	-
Nonagricultural industries.....	137,717	137,711	137,900	136,599	137,738	137,595	137,551	137,035	136,837
Wage and salary workers ¹	128,707	128,883	129,200	127,950	128,800	128,840	128,803	128,437	128,393
Government.....	20,326	20,139	19,661	20,928	20,858	20,726	20,309	20,318	20,302
Private industries.....	108,381	108,744	109,538	106,989	107,946	108,186	108,505	108,209	108,070
Private households.....	692	766	822	-	-	-	-	-	-
Other industries.....	107,689	107,977	108,716	106,362	107,251	107,510	107,727	107,511	107,319
Self-employed workers, unincorporated.....	8,927	8,752	8,618	8,780	8,773	8,650	8,655	8,543	8,525
Unpaid family workers.....	83	76	82	-	-	-	-	-	-
PERSONS AT WORK PART TIME²									
All industries									
Part time for economic reasons ³	8,737	8,738	8,514	8,533	8,433	8,600	8,548	8,552	8,396
Slack work or business conditions.....	5,994	5,660	5,542	6,164	5,595	5,689	5,834	5,806	5,687
Could only find part-time work.....	2,360	2,570	2,555	2,301	2,332	2,480	2,473	2,401	2,517
Part time for noneconomic reasons ⁴	16,635	17,355	16,680	18,219	18,417	18,282	18,468	18,470	18,258
Nonagricultural industries									
Part time for economic reasons ³	8,610	8,600	8,372	8,384	8,265	8,475	8,400	8,400	8,218
Slack work or business conditions.....	5,907	5,570	5,438	6,051	5,504	5,581	5,731	5,704	5,569
Could only find part-time work.....	2,346	2,537	2,536	2,235	2,305	2,457	2,444	2,341	2,466
Part time for noneconomic reasons ⁴	16,313	16,983	16,283	17,886	17,984	17,967	18,126	18,151	17,880

1 Includes self-employed workers whose businesses are incorporated.

2 Refers to those who worked 1 to 34 hours during the survey reference week and excludes employed persons who were absent from their jobs for the entire week.

3 Refers to those who worked 1 to 34 hours during the reference week for an economic reason such as slack work or unfavorable business conditions, inability to find full-time work, or seasonal declines in demand.

4 Refers to persons who usually work part time for noneconomic reasons such as childcare problems, family or personal obligations, school or training, retirement or Social Security limits on earnings, and other reasons. This excludes persons who usually work full time but worked only 1 to 34 hours during the reference week for reasons such as vacations, holidays, illness, and bad weather.

- Data not available.

NOTE: Detail for the seasonally adjusted data shown in this table will not necessarily add to totals because of the independent seasonal adjustment of the various series. Updated population controls are introduced annually with the release of January data.

HOUSEHOLD DATA

Table A-9. Selected employment indicators

[Numbers in thousands]

Characteristic	Not seasonally adjusted			Seasonally adjusted					
	July 2010	June 2011	July 2011	July 2010	Mar. 2011	Apr. 2011	May 2011	June 2011	July 2011
AGE AND SEX									
Total, 16 years and over.....	140,134	140,129	140,384	138,991	139,864	139,674	139,779	139,334	139,296
16 to 19 years.....	5,290	4,891	5,193	4,312	4,339	4,255	4,240	4,299	4,244
16 to 17 years.....	1,698	1,554	1,714	1,343	1,326	1,247	1,249	1,358	1,343
18 to 19 years.....	3,591	3,337	3,478	2,974	2,990	2,989	2,982	2,945	2,890
20 years and over.....	134,844	135,238	135,191	134,679	135,525	135,419	135,539	135,035	135,052
20 to 24 years.....	13,275	13,289	13,440	12,677	13,021	12,978	12,970	12,911	12,860
25 years and over.....	121,569	121,949	121,751	122,098	122,479	122,423	122,641	122,175	122,228
25 to 54 years.....	93,780	93,441	93,333	94,075	93,949	93,690	93,919	93,505	93,550
25 to 34 years.....	30,405	30,463	30,431	30,288	30,538	30,354	30,627	30,416	30,322
35 to 44 years.....	30,470	30,170	30,157	30,610	30,605	30,441	30,302	30,197	30,249
45 to 54 years.....	32,906	32,808	32,745	33,177	32,806	32,895	32,989	32,892	32,979
55 years and over.....	27,789	28,509	28,418	28,023	28,530	28,733	28,722	28,670	28,677
Men, 16 years and over.....	74,749	74,848	75,208	73,466	74,108	73,973	74,177	74,014	73,908
16 to 19 years.....	2,680	2,421	2,619	2,126	2,149	2,033	2,040	2,077	2,072
16 to 17 years.....	905	775	888	671	688	582	594	646	652
18 to 19 years.....	1,776	1,646	1,731	1,464	1,454	1,441	1,446	1,451	1,429
20 years and over.....	72,068	72,427	72,588	71,340	71,959	71,939	72,137	71,937	71,836
20 to 24 years.....	6,857	7,051	7,127	6,438	6,731	6,712	6,756	6,754	6,711
25 years and over.....	65,211	65,376	65,461	64,934	65,207	65,193	65,448	65,193	65,163
25 to 54 years.....	50,624	50,269	50,329	50,342	50,241	50,107	50,358	50,096	50,018
25 to 34 years.....	16,616	16,666	16,665	16,414	16,677	16,557	16,747	16,607	16,481
35 to 44 years.....	16,702	16,386	16,447	16,641	16,481	16,428	16,421	16,365	16,371
45 to 54 years.....	17,306	17,217	17,217	17,287	17,083	17,123	17,189	17,124	17,167
55 years and over.....	14,588	15,108	15,133	14,592	14,966	15,087	15,090	15,097	15,146
Women, 16 years and over.....	65,385	65,282	65,176	65,526	65,756	65,702	65,602	65,320	65,388
16 to 19 years.....	2,609	2,471	2,573	2,186	2,190	2,222	2,200	2,222	2,172
16 to 17 years.....	794	779	826	672	638	665	654	713	691
18 to 19 years.....	1,816	1,691	1,747	1,510	1,537	1,548	1,537	1,494	1,461
20 years and over.....	62,775	62,811	62,603	63,340	63,566	63,479	63,402	63,098	63,216
20 to 24 years.....	6,418	6,238	6,313	6,239	6,290	6,266	6,214	6,157	6,149
25 years and over.....	56,358	56,573	56,290	57,164	57,272	57,230	57,193	56,982	57,064
25 to 54 years.....	43,157	43,172	43,004	43,733	43,708	43,584	43,561	43,409	43,533
25 to 34 years.....	13,789	13,797	13,767	13,875	13,862	13,798	13,880	13,809	13,841
35 to 44 years.....	13,768	13,784	13,710	13,968	14,124	14,014	13,881	13,833	13,879
45 to 54 years.....	15,600	15,591	15,528	15,890	15,723	15,772	15,800	15,768	15,813
55 years and over.....	13,201	13,401	13,285	13,431	13,564	13,646	13,631	13,573	13,532
MARITAL STATUS									
Married men, spouse present.....	43,367	43,096	43,213	43,372	42,880	42,987	42,998	43,004	43,145
Married women, spouse present.....	33,886	33,449	33,243	34,345	34,236	34,062	33,826	33,676	33,734
Women who maintain families.....	8,829	9,038	9,224	-	-	-	-	-	-
FULL- OR PART-TIME STATUS									
Full-time workers ¹	113,974	113,255	113,759	112,002	112,775	112,484	112,342	111,907	111,859
Part-time workers ²	26,160	26,875	26,624	27,145	27,087	27,088	27,418	27,631	27,606
MULTIPLE JOBHOLDERS									
Total multiple jobholders.....	6,579	6,861	6,724	6,553	6,746	6,775	6,939	6,880	6,741
Percent of total employed.....	4.7	4.9	4.8	4.7	4.8	4.9	5.0	4.9	4.8
SELF-EMPLOYMENT									
Self-employed workers, incorporated.....	5,132	5,155	5,170	-	-	-	-	-	-
Self-employed workers, unincorporated.....	9,811	9,627	9,485	9,605	9,608	9,468	9,477	9,372	9,335

1 Employed full-time workers are persons who usually work 35 hours or more per week.

2 Employed part-time workers are persons who usually work less than 35 hours per week.

- Data not available.

NOTE: Detail for the seasonally adjusted data shown in this table will not necessarily add to totals because of the independent seasonal adjustment of the various series. Updated population controls are introduced annually with the release of January data.

HOUSEHOLD DATA

Table A-10. Selected unemployment indicators, seasonally adjusted

Characteristic	Number of unemployed persons (in thousands)			Unemployment rates					
	July 2010	June 2011	July 2011	July 2010	Mar. 2011	Apr. 2011	May 2011	June 2011	July 2011
AGE AND SEX									
Total, 16 years and over.....	14,637	14,087	13,931	9.5	8.8	9.0	9.1	9.2	9.1
16 to 19 years.....	1,526	1,399	1,412	26.1	24.5	24.9	24.2	24.5	25.0
16 to 17 years.....	587	535	540	30.4	29.0	31.4	29.4	28.2	28.7
18 to 19 years.....	924	869	870	23.7	22.5	22.2	21.9	22.8	23.1
20 years and over.....	13,111	12,688	12,519	8.9	8.2	8.3	8.5	8.6	8.5
20 to 24 years.....	2,337	2,190	2,192	15.6	15.0	14.9	14.7	14.5	14.6
25 years and over.....	10,787	10,573	10,314	8.1	7.4	7.6	7.8	8.0	7.8
25 to 54 years.....	8,678	8,378	8,157	8.4	7.8	8.0	8.1	8.2	8.0
25 to 34 years.....	3,335	3,231	3,257	9.9	9.1	9.5	9.3	9.6	9.7
35 to 44 years.....	2,649	2,547	2,319	8.0	7.2	7.3	7.7	7.8	7.1
45 to 54 years.....	2,695	2,600	2,581	7.5	7.1	7.1	7.3	7.3	7.3
55 years and over.....	2,072	2,142	2,123	6.9	6.5	6.5	6.8	7.0	6.9
Men, 16 years and over.....	8,520	7,952	7,844	10.4	9.3	9.4	9.5	9.7	9.6
16 to 19 years.....	867	785	774	29.0	26.2	28.1	27.0	27.4	27.2
16 to 17 years.....	321	285	278	32.4	28.5	32.7	31.3	30.7	29.9
18 to 19 years.....	533	502	491	26.7	25.3	26.4	25.2	25.7	25.6
20 years and over.....	7,653	7,167	7,070	9.7	8.6	8.8	8.9	9.1	9.0
20 to 24 years.....	1,429	1,239	1,254	18.2	16.4	16.1	15.7	15.5	15.7
25 years and over.....	6,261	6,010	5,821	8.8	7.8	7.9	8.1	8.4	8.2
25 to 54 years.....	5,035	4,710	4,608	9.1	8.0	8.2	8.4	8.6	8.4
25 to 34 years.....	1,952	1,842	1,866	10.6	9.3	9.9	9.7	10.0	10.2
35 to 44 years.....	1,498	1,442	1,318	8.3	7.2	7.2	7.5	8.1	7.5
45 to 54 years.....	1,584	1,425	1,423	8.4	7.6	7.7	8.0	7.7	7.7
55 years and over.....	1,227	1,301	1,213	7.8	6.8	6.9	7.0	7.9	7.4
Women, 16 years and over.....	6,117	6,134	6,088	8.5	8.3	8.4	8.5	8.6	8.5
16 to 19 years.....	659	614	638	23.2	22.7	21.8	21.3	21.6	22.7
16 to 17 years.....	266	249	262	28.4	29.5	30.1	27.5	25.9	27.5
18 to 19 years.....	391	367	379	20.6	19.7	17.9	18.6	19.7	20.6
20 years and over.....	5,458	5,520	5,450	7.9	7.7	7.9	8.0	8.0	7.9
20 to 24 years.....	908	951	938	12.7	13.5	13.7	13.6	13.4	13.2
25 years and over.....	4,525	4,562	4,493	7.3	7.1	7.3	7.4	7.4	7.3
25 to 54 years.....	3,644	3,668	3,549	7.7	7.5	7.7	7.6	7.8	7.5
25 to 34 years.....	1,382	1,389	1,390	9.1	9.0	9.1	8.8	9.1	9.1
35 to 44 years.....	1,151	1,104	1,001	7.6	7.1	7.5	7.8	7.4	6.7
45 to 54 years.....	1,111	1,175	1,158	6.5	6.5	6.5	6.5	6.9	6.8
55 years and over ¹	984	897	1,042	6.9	5.8	5.4	6.0	6.3	7.3
MARITAL STATUS									
Married men, spouse present.....	3,081	2,821	2,819	6.6	5.9	6.0	5.9	6.2	6.1
Married women, spouse present.....	2,100	1,999	2,019	5.8	5.7	5.7	5.8	5.6	5.6
Women who maintain families ¹	1,362	1,325	1,270	13.4	12.3	11.7	12.7	12.8	12.1
FULL- OR PART-TIME STATUS									
Full-time workers ²	12,740	12,093	12,132	10.2	9.4	9.6	9.7	9.8	9.8
Part-time workers ³	1,854	1,972	1,781	6.4	6.3	6.4	6.3	6.7	6.1

1 Not seasonally adjusted.

2 Full-time workers are unemployed persons who have expressed a desire to work full time (35 hours or more per week) or are on layoff from full-time jobs.

3 Part-time workers are unemployed persons who have expressed a desire to work part time (less than 35 hours per week) or are on layoff from part-time jobs.

NOTE: Detail for the seasonally adjusted data shown in this table will not necessarily add to totals because of the independent seasonal adjustment of the various series. Updated population controls are introduced annually with the release of January data.

HOUSEHOLD DATA

Table A-11. Unemployed persons by reason for unemployment

[Numbers in thousands]

Reason	Not seasonally adjusted			Seasonally adjusted					
	July 2010	June 2011	July 2011	July 2010	Mar. 2011	Apr. 2011	May 2011	June 2011	July 2011
NUMBER OF UNEMPLOYED									
Job losers and persons who completed temporary jobs.....	8,964	7,940	8,107	9,090	8,209	8,144	8,274	8,261	8,215
On temporary layoff.....	1,281	1,097	1,294	1,268	1,197	1,251	1,214	1,251	1,268
Not on temporary layoff.....	7,682	6,843	6,813	7,822	7,013	6,894	7,060	7,010	6,947
Permanent job losers.....	6,383	5,500	5,509	6,462	5,625	5,480	5,653	5,606	5,567
Persons who completed temporary jobs.....	1,300	1,343	1,305	1,360	1,388	1,414	1,407	1,405	1,380
Job leavers.....	935	923	973	896	896	942	908	965	928
Reentrants.....	3,591	3,836	3,603	3,417	3,262	3,375	3,433	3,430	3,410
New entrants.....	1,647	1,710	1,745	1,197	1,360	1,346	1,231	1,222	1,270
PERCENT DISTRIBUTION									
Job losers and persons who completed temporary jobs.....	59.2	55.1	56.2	62.3	59.8	59.0	59.8	59.5	59.4
On temporary layoff.....	8.5	7.6	9.0	8.7	8.7	9.1	8.8	9.0	9.2
Not on temporary layoff.....	50.8	47.5	47.2	53.6	51.1	49.9	51.0	50.5	50.3
Job leavers.....	6.2	6.4	6.7	6.1	6.5	6.8	6.6	7.0	6.7
Reentrants.....	23.7	26.6	25.0	23.4	23.8	24.4	24.8	24.7	24.7
New entrants.....	10.9	11.9	12.1	8.2	9.9	9.8	8.9	8.8	9.2
UNEMPLOYED AS A PERCENT OF THE CIVILIAN LABOR FORCE									
Job losers and persons who completed temporary jobs.....	5.8	5.1	5.2	5.9	5.4	5.3	5.4	5.4	5.4
Job leavers.....	0.6	0.6	0.6	0.6	0.6	0.6	0.6	0.6	0.6
Reentrants.....	2.3	2.5	2.3	2.2	2.1	2.2	2.2	2.2	2.2
New entrants.....	1.1	1.1	1.1	0.8	0.9	0.9	0.8	0.8	0.8

NOTE: Updated population controls are introduced annually with the release of January data.

HOUSEHOLD DATA

Table A-12. Unemployed persons by duration of unemployment

[Numbers in thousands]

Duration	Not seasonally adjusted			Seasonally adjusted					
	July 2010	June 2011	July 2011	July 2010	Mar. 2011	Apr. 2011	May 2011	June 2011	July 2011
NUMBER OF UNEMPLOYED									
Less than 5 weeks.....	3,111	3,808	2,952	2,833	2,449	2,691	2,664	3,076	2,689
5 to 14 weeks.....	3,507	2,698	3,496	3,098	2,914	2,907	2,892	2,972	3,088
15 weeks and over.....	8,519	7,903	7,980	8,709	8,078	7,845	8,184	8,125	8,150
15 to 26 weeks.....	1,978	1,845	1,762	2,171	1,957	2,006	1,984	1,836	1,965
27 weeks and over.....	6,541	6,058	6,218	6,539	6,122	5,839	6,200	6,289	6,185
Average (mean) duration, in weeks ¹	32.6	38.0	39.0	33.9	39.0	38.3	39.7	39.9	40.4
Median duration, in weeks.....	20.3	19.3	19.7	21.7	21.7	20.7	22.0	22.5	21.2
PERCENT DISTRIBUTION									
Less than 5 weeks.....	20.6	26.4	20.5	19.4	18.2	20.0	19.4	21.7	19.3
5 to 14 weeks.....	23.2	18.7	24.2	21.2	21.7	21.6	21.0	21.0	22.2
15 weeks and over.....	56.3	54.8	55.3	59.5	60.1	58.4	59.6	57.3	58.5
15 to 26 weeks.....	13.1	12.8	12.2	14.8	14.6	14.9	14.4	13.0	14.1
27 weeks and over.....	43.2	42.0	43.1	44.7	45.5	43.4	45.1	44.4	44.4

¹ Beginning in January 2011, this series reflects a change to the collection of data on unemployment duration. For more information, see www.bls.gov/cps/duration.htm.

NOTE: Updated population controls are introduced annually with the release of January data.

HOUSEHOLD DATA

Table A-13. Employed and unemployed persons by occupation, not seasonally adjusted

[Numbers in thousands]

Occupation	Employed		Unemployed		Unemployment rates	
	July 2010	July 2011	July 2010	July 2011	July 2010	July 2011
Total, 16 years and over ¹	140,134	140,384	15,137	14,428	9.7	9.3
Management, professional, and related occupations.....	50,974	51,662	2,687	2,742	5.0	5.0
Management, business, and financial operations occupations.....	21,015	21,747	1,045	1,053	4.7	4.6
Professional and related occupations.....	29,959	29,915	1,642	1,689	5.2	5.3
Service occupations.....	25,314	25,584	2,903	2,764	10.3	9.8
Sales and office occupations.....	33,588	33,131	3,494	3,288	9.4	9.0
Sales and related occupations.....	15,400	15,503	1,723	1,603	10.1	9.4
Office and administrative support occupations.....	18,188	17,628	1,771	1,685	8.9	8.7
Natural resources, construction, and maintenance occupations.....	13,886	13,417	2,117	1,744	13.2	11.5
Farming, fishing, and forestry occupations.....	1,160	1,166	142	157	10.9	11.9
Construction and extraction occupations.....	7,775	7,317	1,470	1,161	15.9	13.7
Installation, maintenance, and repair occupations.....	4,950	4,934	506	426	9.3	7.9
Production, transportation, and material moving occupations.....	16,372	16,590	2,256	2,103	12.1	11.2
Production occupations.....	8,304	8,055	1,161	1,049	12.3	11.5
Transportation and material moving occupations.....	8,068	8,534	1,095	1,054	11.9	11.0

¹ Persons with no previous work experience and persons whose last job was in the U.S. Armed Forces are included in the unemployed total.

NOTE: Updated population controls are introduced annually with the release of January data. Effective with January 2011 data, occupations reflect the introduction of the 2010 Census occupational classification system into the Current Population Survey, or household survey. This classification system is derived from the 2010 Standard Occupational Classification (SOC). No historical data have been revised. Data for 2011 are not strictly comparable with earlier years.

HOUSEHOLD DATA

Table A-14. Unemployed persons by industry and class of worker, not seasonally adjusted

Industry and class of worker	Number of unemployed persons (in thousands)		Unemployment rates	
	July 2010	July 2011	July 2010	July 2011
Total, 16 years and over ¹	15,137	14,428	9.7	9.3
Nonagricultural private wage and salary workers.....	11,555	10,515	9.6	8.8
Mining, quarrying, and oil and gas extraction.....	79	53	10.1	6.0
Construction.....	1,528	1,137	17.3	13.6
Manufacturing.....	1,556	1,418	10.0	9.2
Durable goods.....	1,028	934	10.4	9.6
Nondurable goods.....	528	484	9.2	8.5
Wholesale and retail trade.....	2,023	1,916	9.8	9.4
Transportation and utilities.....	537	486	9.2	7.8
Information.....	344	237	10.6	7.6
Financial activities.....	582	552	6.4	6.0
Professional and business services.....	1,447	1,389	10.0	9.4
Education and health services.....	1,420	1,263	6.6	5.9
Leisure and hospitality.....	1,570	1,510	11.4	10.9
Other services.....	469	554	7.4	8.6
Agriculture and related private wage and salary workers.....	134	166	8.7	9.8
Government workers.....	1,187	1,349	5.5	6.4
Self-employed workers, unincorporated, and unpaid family workers.....	614	653	5.8	6.4

¹ Persons with no previous work experience and persons whose last job was in the U.S. Armed Forces are included in the unemployed total.

NOTE: Updated population controls are introduced annually with the release of January data.

HOUSEHOLD DATA

Table A-15. Alternative measures of labor underutilization

[Percent]

Measure	Not seasonally adjusted			Seasonally adjusted					
	July 2010	June 2011	July 2011	July 2010	Mar. 2011	Apr. 2011	May 2011	June 2011	July 2011
U-1 Persons unemployed 15 weeks or longer, as a percent of the civilian labor force.....	5.5	5.1	5.2	5.7	5.3	5.1	5.3	5.3	5.3
U-2 Job losers and persons who completed temporary jobs, as a percent of the civilian labor force.....	5.8	5.1	5.2	5.9	5.4	5.3	5.4	5.4	5.4
U-3 Total unemployed, as a percent of the civilian labor force (official unemployment rate).....	9.7	9.3	9.3	9.5	8.8	9.0	9.1	9.2	9.1
U-4 Total unemployed plus discouraged workers, as a percent of the civilian labor force plus discouraged workers.....	10.4	9.9	10.0	10.2	9.4	9.5	9.5	9.8	9.8
U-5 Total unemployed, plus discouraged workers, plus all other persons marginally attached to the labor force, as a percent of the civilian labor force plus all persons marginally attached to the labor force.....	11.2	10.9	10.9	11.0	10.3	10.4	10.3	10.7	10.7
U-6 Total unemployed, plus all persons marginally attached to the labor force, plus total employed part time for economic reasons, as a percent of the civilian labor force plus all persons marginally attached to the labor force.....	16.8	16.4	16.3	16.5	15.7	15.9	15.8	16.2	16.1

NOTE: Persons marginally attached to the labor force are those who currently are neither working nor looking for work but indicate that they want and are available for a job and have looked for work sometime in the past 12 months. Discouraged workers, a subset of the marginally attached, have given a job-market related reason for not currently looking for work. Persons employed part time for economic reasons are those who want and are available for full-time work but have had to settle for a part-time schedule. Updated population controls are introduced annually with the release of January data.

HOUSEHOLD DATA

Table A-16. Persons not in the labor force and multiple jobholders by sex, not seasonally adjusted

[Numbers in thousands]

Category	Total		Men		Women	
	July 2010	July 2011	July 2010	July 2011	July 2010	July 2011
NOT IN THE LABOR FORCE						
Total not in the labor force.....	82,620	84,859	32,135	33,476	50,484	51,383
Persons who currently want a job.....	6,143	6,810	2,801	3,072	3,343	3,738
Marginally attached to the labor force ¹	2,622	2,785	1,385	1,392	1,237	1,393
Discouraged workers ²	1,185	1,119	742	639	443	480
Other persons marginally attached to the labor force ³	1,437	1,667	644	754	793	913
MULTIPLE JOBHOLDERS						
Total multiple jobholders ⁴	6,579	6,724	3,206	3,371	3,373	3,353
Percent of total employed.....	4.7	4.8	4.3	4.5	5.2	5.1
Primary job full time, secondary job part time.....	3,424	3,569	1,821	1,994	1,603	1,574
Primary and secondary jobs both part time.....	1,679	1,726	557	628	1,122	1,098
Primary and secondary jobs both full time.....	283	246	199	151	84	95
Hours vary on primary or secondary job.....	1,144	1,118	604	557	540	561

1 Data refer to persons who want a job, have searched for work during the prior 12 months, and were available to take a job during the reference week, but had not looked for work in the past 4 weeks.

2 Includes those who did not actively look for work in the prior 4 weeks for reasons such as thinks no work available, could not find work, lacks schooling or training, employer thinks too young or old, and other types of discrimination.

3 Includes those who did not actively look for work in the prior 4 weeks for such reasons as school or family responsibilities, ill health, and transportation problems, as well as a number for whom reason for nonparticipation was not determined.

4 Includes a small number of persons who work part time on their primary job and full time on their secondary job(s), not shown separately.

NOTE: Updated population controls are introduced annually with the release of January data.

ESTABLISHMENT DATA

Table B-1. Employees on nonfarm payrolls by industry sector and selected industry detail

[In thousands]

Industry	Not seasonally adjusted				Seasonally adjusted				Change from: June 2011 - July 2011 ^P
	July 2010	May 2011	June 2011 ^P	July 2011 ^P	July 2010	May 2011	June 2011 ^P	July 2011 ^P	
Total nonfarm.....	129,569	131,707	132,151	130,920	129,932	131,027	131,073	131,190	117
Total private.....	108,252	109,199	110,066	110,062	107,351	108,922	109,002	109,156	154
Goods-producing.....	18,104	18,029	18,324	18,417	17,791	18,019	18,035	18,077	42
Mining and logging.....	722	777	797	812	711	780	790	800	10
Logging.....	51.6	45.7	46.7	49.1	50.5	47.4	46.9	47.6	0.7
Mining.....	670.7	731.2	750.5	763.3	660.1	732.7	742.8	751.9	9.1
Oil and gas extraction.....	159.3	171.9	175.7	177.3	158.2	171.8	173.3	174.7	1.4
Mining, except oil and gas ¹	209.7	215.0	220.1	219.9	202.9	212.4	213.4	212.7	-0.7
Coal mining.....	80.3	86.6	87.3	86.5	80.6	86.6	86.7	86.0	-0.7
Support activities for mining.....	301.7	344.3	354.7	366.1	299.0	348.5	356.1	364.5	8.4
Construction.....	5,771	5,569	5,734	5,814	5,500	5,529	5,524	5,532	8
Construction of buildings.....	1,271.6	1,212.3	1,253.5	1,265.5	1,221.8	1,217.2	1,217.7	1,218.7	1.0
Residential building.....	587.4	557.0	579.5	581.8	564.0	558.2	557.1	556.0	-1.1
Nonresidential building.....	684.2	655.3	674.0	683.7	657.8	659.0	660.6	662.7	2.1
Heavy and civil engineering construction.....	884.9	871.8	898.8	908.9	825.9	848.3	847.3	846.9	-0.4
Specialty trade contractors.....	3,614.7	3,484.7	3,582.0	3,639.4	3,452.4	3,463.7	3,458.6	3,466.2	7.6
Residential specialty trade contractors.....	1,536.2	1,483.9	1,520.9	1,541.5	1,458.6	1,463.4	1,455.4	1,454.9	-0.5
Nonresidential specialty trade contractors.....	2,078.5	2,000.8	2,061.1	2,097.9	1,993.8	2,000.3	2,003.2	2,011.3	8.1
Manufacturing.....	11,611	11,683	11,793	11,791	11,580	11,710	11,721	11,745	24
Durable goods.....	7,112	7,263	7,331	7,317	7,114	7,271	7,288	7,311	23
Wood products.....	350.0	338.8	340.0	336.1	342.8	337.0	331.8	327.7	-4.1
Nonmetallic mineral products.....	381.7	375.3	382.6	382.9	371.6	372.2	372.1	371.8	-0.3
Primary metals.....	364.6	383.2	386.1	384.7	365.2	383.8	384.7	385.9	1.2
Fabricated metal products.....	1,293.5	1,349.6	1,365.4	1,368.7	1,295.2	1,355.8	1,362.4	1,366.9	4.5
Machinery.....	999.7	1,038.1	1,050.8	1,053.3	998.2	1,041.1	1,045.3	1,046.8	1.5
Computer and electronic products ¹	1,105.1	1,121.0	1,129.3	1,130.4	1,101.4	1,123.4	1,125.5	1,128.0	2.5
Computer and peripheral equipment.....	161.5	169.9	171.7	171.9	161.8	169.9	171.9	171.9	0.0
Communication equipment.....	118.3	117.9	119.0	117.3	118.2	118.3	118.0	117.5	-0.5
Semiconductors and electronic components.....	371.9	382.9	385.4	388.4	371.3	384.4	384.4	387.8	3.4
Electronic instruments.....	408.3	402.7	404.9	404.4	405.4	403.2	403.4	402.8	-0.6
Electrical equipment and appliances.....	364.3	368.8	371.5	372.7	362.1	370.0	370.6	371.3	0.7
Transportation equipment ¹	1,323.7	1,361.6	1,372.7	1,355.5	1,353.5	1,360.6	1,365.5	1,379.9	14.4
Motor vehicles and parts ²	664.6	698.0	702.9	686.0	695.9	697.5	699.6	711.6	12.0
Furniture and related products.....	363.0	353.1	354.5	356.3	356.8	351.7	351.7	354.5	2.8
Miscellaneous manufacturing.....	566.6	573.6	578.2	576.6	566.7	575.7	578.4	578.0	-0.4
Nondurable goods.....	4,499	4,420	4,462	4,474	4,466	4,439	4,433	4,434	1
Food manufacturing.....	1,473.8	1,429.5	1,448.3	1,465.9	1,451.4	1,448.7	1,443.8	1,445.5	1.7
Beverages and tobacco products.....	183.9	182.1	189.7	190.5	180.3	182.9	185.3	184.6	-0.7
Textile mills.....	119.4	122.6	123.6	123.3	119.8	122.1	122.8	123.6	0.8
Textile product mills.....	119.9	116.5	117.5	116.7	119.9	116.4	116.4	116.0	-0.4
Apparel.....	156.2	156.2	156.9	153.4	156.7	155.7	154.9	152.9	-2.0
Leather and allied products.....	26.9	29.0	29.6	28.2	27.4	29.0	29.2	29.1	-0.1
Paper and paper products.....	399.0	395.1	399.5	400.8	396.5	396.4	397.4	398.0	0.6
Printing and related support activities.....	487.7	463.3	470.0	467.3	489.1	469.5	467.8	466.2	-1.6
Petroleum and coal products.....	118.0	113.8	115.1	116.0	114.3	112.6	112.1	111.9	-0.2
Chemicals.....	786.4	775.3	780.5	782.4	782.8	776.1	776.4	777.7	1.3
Plastics and rubber products.....	628.0	630.5	631.3	629.4	628.0	629.3	626.6	628.7	2.1
Private service-providing.....	90,148	91,170	91,742	91,645	89,560	90,903	90,967	91,079	112
Trade, transportation, and utilities.....	24,605	24,838	24,991	24,967	24,609	24,893	24,923	24,951	28
Wholesale trade.....	5,483.5	5,544.8	5,579.1	5,576.6	5,453.8	5,538.0	5,543.7	5,545.4	1.7
Durable goods.....	2,732.7	2,773.1	2,791.7	2,790.6	2,717.6	2,773.6	2,776.9	2,775.0	-1.9
Nondurable goods.....	1,942.2	1,955.6	1,965.4	1,964.6	1,929.9	1,948.3	1,948.3	1,951.4	3.1
Electronic markets and agents and brokers.....	808.6	816.1	822.0	821.4	806.3	816.1	818.5	819.0	0.5
Retail trade.....	14,411.5	14,480.4	14,565.0	14,598.3	14,419.3	14,539.1	14,550.3	14,576.2	25.9
Motor vehicle and parts dealers ¹	1,632.9	1,676.2	1,688.0	1,693.8	1,616.5	1,669.8	1,670.3	1,675.3	5.0
Automobile dealers.....	1,006.8	1,037.6	1,045.4	1,048.8	1,001.9	1,037.3	1,039.5	1,041.4	1.9
Furniture and home furnishings stores.....	429.3	428.7	429.2	432.5	435.0	436.1	436.6	438.1	1.5

See footnotes at end of table.

ESTABLISHMENT DATA

Table B-1. Employees on nonfarm payrolls by industry sector and selected industry detail

— Continued

[In thousands]

Industry	Not seasonally adjusted				Seasonally adjusted				Change from: June 2011 - July 2011 ^P
	July 2010	May 2011	June 2011 ^P	July 2011 ^P	July 2010	May 2011	June 2011 ^P	July 2011 ^P	
Retail trade - Continued									
Electronics and appliance stores.....	485.4	491.6	493.9	494.1	494.7	501.5	502.1	503.6	1.5
Building material and garden supply stores...	1,147.0	1,188.9	1,178.6	1,148.7	1,120.8	1,122.3	1,120.4	1,118.3	-2.1
Food and beverage stores.....	2,825.4	2,831.0	2,856.7	2,854.2	2,808.4	2,830.6	2,832.4	2,830.9	-1.5
Health and personal care stores.....	979.2	970.8	970.7	976.5	978.1	972.7	969.4	978.0	8.6
Gasoline stations.....	833.5	822.5	831.5	834.1	820.2	820.1	822.6	821.5	-1.1
Clothing and clothing accessories stores.....	1,371.7	1,386.7	1,407.2	1,430.2	1,378.2	1,427.2	1,430.6	1,434.0	3.4
Sporting goods, hobby, book, and music stores.....	578.9	579.1	577.5	581.3	600.6	597.4	596.6	598.3	1.7
General merchandise stores ¹	2,957.7	2,933.2	2,958.1	2,970.4	2,987.0	2,979.9	2,985.9	2,989.8	3.9
Department stores.....	1,467.0	1,451.8	1,465.6	1,479.6	1,497.3	1,493.8	1,495.9	1,501.3	5.4
Miscellaneous store retailers.....	764.3	766.1	769.8	775.8	760.7	765.0	766.8	770.8	4.0
Nonstore retailers.....	406.2	405.6	403.8	406.7	419.1	416.5	416.6	417.6	1.0
Transportation and warehousing.....	4,156.5	4,260.5	4,291.8	4,236.2	4,184.8	4,264.4	4,276.8	4,277.9	1.1
Air transportation.....	465.9	475.5	479.1	481.9	462.6	475.7	478.4	480.8	2.4
Rail transportation.....	216.9	223.2	226.5	227.3	216.0	223.5	226.3	226.2	-0.1
Water transportation.....	65.2	64.3	65.0	64.7	62.8	64.0	63.1	62.7	-0.4
Truck transportation.....	1,264.2	1,273.1	1,298.2	1,299.9	1,246.7	1,278.5	1,282.5	1,283.8	1.3
Transit and ground passenger transportation.....	380.5	463.3	445.4	385.2	437.5	446.3	447.1	445.3	-1.8
Pipeline transportation.....	42.3	43.1	43.5	43.6	41.9	43.3	43.5	43.3	-0.2
Scenic and sightseeing transportation.....	36.0	31.5	36.4	38.3	27.6	29.2	29.6	28.9	-0.7
Support activities for transportation.....	547.0	552.5	558.3	558.4	544.4	554.7	556.2	556.6	0.4
Couriers and messengers.....	512.6	512.0	515.5	509.8	518.3	521.8	522.4	522.1	-0.3
Warehousing and storage.....	625.9	622.0	623.9	627.1	627.0	627.4	627.7	628.2	0.5
Utilities.....	553.4	552.4	554.9	555.8	550.7	551.6	551.7	551.7	0.0
Information.....	2,714	2,688	2,697	2,685	2,706	2,684	2,684	2,683	-1
Publishing industries, except Internet.....	762.2	752.3	757.4	758.2	760.5	755.4	755.9	756.2	0.3
Motion picture and sound recording industries.....	382.4	377.6	376.6	368.3	372.8	367.9	366.0	366.3	0.3
Broadcasting, except Internet.....	293.6	293.1	295.3	294.8	294.8	295.1	295.4	295.1	-0.3
Telecommunications.....	892.0	866.1	866.0	862.8	894.1	869.7	868.4	865.7	-2.7
Data processing, hosting and related services.....	240.8	242.8	240.7	238.5	241.5	240.4	239.5	239.3	-0.2
Other information services.....	143.3	155.8	161.0	162.6	142.5	155.9	158.5	160.4	1.9
Financial activities.....	7,674	7,617	7,657	7,669	7,618	7,625	7,607	7,603	-4
Finance and insurance.....	5,700.9	5,668.0	5,683.8	5,685.0	5,686.7	5,676.7	5,666.8	5,662.9	-3.9
Monetary authorities - central bank.....	20.8	21.2	21.3	21.7	20.7	21.2	21.2	21.5	0.3
Credit intermediation and related activities ¹	2,548.9	2,543.5	2,548.1	2,547.7	2,541.8	2,548.1	2,540.7	2,537.7	-3.0
Depository credit intermediation ¹	1,738.2	1,754.6	1,759.1	1,764.2	1,732.4	1,757.2	1,755.2	1,754.9	-0.3
Commercial banking.....	1,312.6	1,325.5	1,326.5	1,330.6	1,307.6	1,327.3	1,323.7	1,323.9	0.2
Securities, commodity contracts, investments.....	806.2	805.9	812.6	814.3	803.0	808.9	811.5	812.2	0.7
Insurance carriers and related activities.....	2,237.3	2,211.2	2,215.8	2,213.3	2,233.8	2,211.6	2,207.5	2,203.9	-3.6
Funds, trusts, and other financial vehicles.....	87.7	86.2	86.0	88.0	87.4	86.9	85.9	87.6	1.7
Real estate and rental and leasing.....	1,972.8	1,949.3	1,973.1	1,983.5	1,931.7	1,948.7	1,940.5	1,939.6	-0.9
Real estate.....	1,408.4	1,408.3	1,419.7	1,428.1	1,387.8	1,408.9	1,403.9	1,404.5	0.6
Rental and leasing services.....	539.4	515.3	527.7	529.7	519.1	514.1	511.0	509.7	-1.3
Lessors of nonfinancial intangible assets.....	25.0	25.7	25.7	25.7	24.8	25.7	25.6	25.4	-0.2
Professional and business services.....	16,777	17,153	17,299	17,266	16,681	17,155	17,159	17,193	34
Professional and technical services ¹	7,386.2	7,548.5	7,608.8	7,624.9	7,414.8	7,619.9	7,631.2	7,648.9	17.7
Legal services.....	1,123.7	1,109.5	1,121.8	1,124.9	1,111.2	1,113.5	1,110.6	1,114.6	4.0
Accounting and bookkeeping services.....	809.7	875.3	866.1	850.5	882.0	929.2	928.2	924.6	-3.6
Architectural and engineering services.....	1,290.6	1,292.4	1,311.4	1,317.8	1,275.2	1,295.0	1,295.6	1,296.9	1.3
Computer systems design and related services.....	1,444.5	1,495.1	1,504.9	1,516.1	1,441.7	1,499.8	1,506.6	1,512.7	6.1
Management and technical consulting services.....	993.7	1,034.3	1,043.7	1,051.6	990.0	1,038.5	1,040.6	1,046.0	5.4
Management of companies and enterprises.....	1,872.3	1,881.3	1,894.3	1,895.4	1,862.8	1,883.5	1,883.8	1,886.9	3.1
Administrative and waste services.....	7,518.8	7,723.2	7,796.2	7,745.3	7,403.2	7,651.2	7,644.3	7,657.6	13.3

See footnotes at end of table.

ESTABLISHMENT DATA

Table B-1. Employees on nonfarm payrolls by industry sector and selected industry detail

— Continued

[In thousands]

Industry	Not seasonally adjusted				Seasonally adjusted				Change from: June 2011 - July 2011 ^p
	July 2010	May 2011	June 2011 ^p	July 2011 ^p	July 2010	May 2011	June 2011 ^p	July 2011 ^p	
Administrative and waste services - Continued									
Administrative and support services ¹	7,149.3	7,360.1	7,426.9	7,372.4	7,041.9	7,288.4	7,281.7	7,294.2	12.5
Employment services ¹	2,715.6	2,913.0	2,924.7	2,866.8	2,713.8	2,905.3	2,896.2	2,899.5	3.3
Temporary help services	2,066.5	2,249.9	2,247.6	2,198.8	2,073.3	2,241.2	2,229.6	2,229.9	0.3
Business support services	795.2	795.6	796.3	790.5	808.5	803.1	804.6	803.1	-1.5
Services to buildings and dwellings	1,858.1	1,838.8	1,879.3	1,883.2	1,744.9	1,765.8	1,763.0	1,766.3	3.3
Waste management and remediation services	369.5	363.1	369.3	372.9	361.3	362.8	362.6	363.4	0.8
Education and health services	19,256	19,989	19,759	19,638	19,571	19,926	19,938	19,976	38
Educational services	2,865.3	3,249.5	3,007.9	2,900.8	3,154.9	3,204.4	3,203.0	3,204.6	1.6
Health care and social assistance	16,390.9	16,739.3	16,751.2	16,737.5	16,416.3	16,722.0	16,734.6	16,771.3	36.7
Health care ³	13,829.9	14,028.5	14,088.2	14,123.0	13,794.5	14,045.4	14,062.0	14,093.3	31.3
Ambulatory health care services ¹	5,991.5	6,115.1	6,139.7	6,149.0	5,980.2	6,117.5	6,131.2	6,145.3	14.1
Offices of physicians	2,314.3	2,346.0	2,356.7	2,362.9	2,314.1	2,351.0	2,354.3	2,360.6	6.3
Outpatient care centers	601.5	619.5	620.3	618.5	600.7	619.2	619.2	618.7	-0.5
Home health care services	1,084.9	1,117.5	1,122.4	1,123.6	1,082.2	1,116.6	1,121.5	1,124.6	3.1
Hospitals	4,696.2	4,732.8	4,750.5	4,773.0	4,681.0	4,743.8	4,741.8	4,755.8	14.0
Nursing and residential care facilities ¹	3,142.2	3,180.6	3,198.0	3,201.0	3,133.3	3,184.1	3,189.0	3,192.2	3.2
Nursing care facilities	1,665.7	1,679.5	1,689.8	1,688.3	1,662.6	1,681.1	1,686.0	1,685.5	-0.5
Social assistance ¹	2,561.0	2,710.8	2,663.0	2,614.5	2,621.8	2,676.6	2,672.6	2,678.0	5.4
Child day care services	781.8	884.2	833.9	791.1	847.1	860.0	851.7	854.9	3.2
Leisure and hospitality	13,689	13,418	13,821	13,902	13,013	13,175	13,208	13,225	17
Arts, entertainment, and recreation	2,235.1	1,960.9	2,151.2	2,220.9	1,924.1	1,885.4	1,898.8	1,912.3	13.5
Performing arts and spectator sports	453.4	419.4	428.5	445.0	419.3	399.5	407.0	412.5	5.5
Museums, historical sites, zoos, and parks	143.4	135.0	144.4	147.9	127.8	129.5	131.0	131.6	0.6
Amusements, gambling, and recreation	1,638.3	1,406.5	1,578.3	1,628.0	1,377.0	1,356.4	1,360.8	1,368.2	7.4
Accommodation and food services	11,453.4	11,457.1	11,670.0	11,680.9	11,088.6	11,289.7	11,309.6	11,312.6	3.0
Accommodation	1,912.8	1,785.5	1,899.9	1,960.8	1,774.1	1,790.0	1,806.5	1,809.2	2.7
Food services and drinking places	9,540.6	9,671.6	9,770.1	9,720.1	9,314.5	9,499.7	9,503.1	9,503.4	0.3
Other services	5,433	5,467	5,518	5,518	5,362	5,445	5,448	5,448	0
Repair and maintenance	1,144.3	1,161.9	1,166.8	1,161.6	1,136.5	1,152.3	1,153.1	1,153.1	0.0
Personal and laundry services	1,268.3	1,296.3	1,301.6	1,297.2	1,260.9	1,281.7	1,285.3	1,289.0	3.7
Membership associations and organizations	3,020.4	3,008.8	3,049.6	3,058.9	2,964.5	3,010.8	3,009.8	3,006.1	-3.7
Government	21,317	22,508	22,085	20,858	22,581	22,105	22,071	22,034	-37
Federal	3,077.0	2,844.0	2,847.0	2,862.0	3,041.0	2,845.0	2,832.0	2,834.0	2.0
Federal, except U.S. Postal Service	2,417.7	2,217.1	2,224.9	2,231.5	2,388.2	2,214.9	2,205.2	2,207.2	2.0
U.S. Postal Service	658.9	626.5	622.3	630.6	652.4	630.5	627.0	626.6	-0.4
State government	4,854.0	5,135.0	4,872.0	4,768.0	5,154.0	5,093.0	5,087.0	5,064.0	-23.0
State government education	2,073.3	2,418.7	2,147.1	2,075.3	2,393.3	2,387.2	2,388.7	2,389.8	1.1
State government, excluding education	2,781.1	2,716.1	2,724.9	2,692.4	2,760.8	2,705.7	2,697.9	2,674.1	-23.8
Local government	13,386.0	14,529.0	14,366.0	13,228.0	14,386.0	14,167.0	14,152.0	14,136.0	-16.0
Local government education	6,812.6	8,269.4	7,934.1	6,743.7	8,030.1	7,895.9	7,886.3	7,874.1	-12.2
Local government, excluding education	6,573.7	6,259.3	6,431.7	6,484.0	6,355.6	6,270.6	6,265.7	6,261.9	-3.8

1 Includes other industries, not shown separately.

2 Includes motor vehicles, motor vehicle bodies and trailers, and motor vehicle parts.

3 Includes ambulatory health care services, hospitals, and nursing and residential care facilities.

p Preliminary

ESTABLISHMENT DATA

Table B-2. Average weekly hours and overtime of all employees on private nonfarm payrolls by industry sector, seasonally adjusted

Industry	July 2010	May 2011	June 2011 ^P	July 2011 ^P
AVERAGE WEEKLY HOURS				
Total private.....	34.2	34.4	34.3	34.3
Goods-producing.....	39.6	40.1	39.9	39.8
Mining and logging.....	43.6	44.6	44.7	44.2
Construction.....	37.8	38.5	38.4	38.3
Manufacturing.....	40.2	40.6	40.3	40.3
Durable goods.....	40.5	40.9	40.7	40.6
Nondurable goods.....	39.6	40.0	39.8	39.8
Private service-providing.....	33.1	33.2	33.2	33.2
Trade, transportation, and utilities.....	34.3	34.5	34.5	34.5
Wholesale trade.....	38.2	38.7	38.6	38.6
Retail trade.....	31.4	31.4	31.4	31.4
Transportation and warehousing.....	38.5	38.7	38.6	38.6
Utilities.....	41.1	42.1	41.6	41.7
Information.....	36.6	36.6	36.6	36.6
Financial activities.....	37.0	37.1	37.1	37.4
Professional and business services.....	35.5	35.7	35.7	35.7
Education and health services.....	32.8	32.8	32.8	32.9
Leisure and hospitality.....	25.8	25.9	25.8	25.8
Other services.....	31.7	31.8	31.7	31.7
AVERAGE OVERTIME HOURS				
Manufacturing.....	3.0	3.2	3.1	3.1
Durable goods.....	2.9	3.2	3.1	3.1
Nondurable goods.....	3.1	3.3	3.2	3.2

p Preliminary

ESTABLISHMENT DATA

Table B-3. Average hourly and weekly earnings of all employees on private nonfarm payrolls by industry sector, seasonally adjusted

Industry	Average hourly earnings				Average weekly earnings			
	July 2010	May 2011	June 2011 ^P	July 2011 ^P	July 2010	May 2011	June 2011 ^P	July 2011 ^P
Total private.....	\$22.61	\$23.02	\$23.03	\$23.13	\$ 773.26	\$ 791.89	\$ 789.93	\$ 793.36
Goods-producing.....	24.06	24.41	24.39	24.46	952.78	978.84	973.16	973.51
Mining and logging.....	27.40	28.34	27.96	27.97	1,194.64	1,263.96	1,249.81	1,236.27
Construction.....	25.18	25.36	25.36	25.37	951.80	976.36	973.82	971.67
Manufacturing.....	23.33	23.70	23.68	23.79	937.87	962.22	954.30	958.74
Durable goods.....	24.79	25.21	25.22	25.33	1,004.00	1,031.09	1,026.45	1,028.40
Nondurable goods.....	20.95	21.16	21.10	21.20	829.62	846.40	839.78	843.76
Private service-providing.....	22.27	22.68	22.71	22.81	737.14	752.98	753.97	757.29
Trade, transportation, and utilities.....	19.67	20.01	20.03	20.13	674.68	690.35	691.04	694.49
Wholesale trade.....	26.17	26.30	26.31	26.46	999.69	1,017.81	1,015.57	1,021.36
Retail trade.....	15.59	15.78	15.81	15.95	489.53	495.49	496.43	500.83
Transportation and warehousing.....	20.92	21.62	21.64	21.64	805.42	836.69	835.30	835.30
Utilities.....	32.51	33.77	33.86	33.49	1,336.16	1,421.72	1,408.58	1,396.53
Information.....	30.43	31.61	31.47	31.39	1,113.74	1,156.93	1,151.80	1,148.87
Financial activities.....	27.27	27.72	27.72	27.59	1,008.99	1,028.41	1,028.41	1,031.87
Professional and business services.....	27.32	27.66	27.78	28.02	969.86	987.46	991.75	1,000.31
Education and health services.....	22.97	23.54	23.54	23.69	753.42	772.11	772.11	779.40
Leisure and hospitality.....	13.07	13.24	13.19	13.22	337.21	342.92	340.30	341.08
Other services.....	20.14	20.40	20.47	20.51	638.44	648.72	648.90	650.17

p Preliminary

ESTABLISHMENT DATA

Table B-4. Indexes of aggregate weekly hours and payrolls for all employees on private nonfarm payrolls by industry sector, seasonally adjusted

[2007=100]

Industry	Index of aggregate weekly hours ¹					Index of aggregate weekly payrolls ²				
	July 2010	May 2011	June 2011 ^p	July 2011 ^p	Percent change from: June 2011 - July 2011 ^p	July 2010	May 2011	June 2011 ^p	July 2011 ^p	Percent change from: June 2011 - July 2011 ^p
Total private.....	92.0	93.9	93.7	93.8	0.1	99.2	103.1	102.9	103.5	0.6
Goods-producing.....	80.3	82.3	82.0	82.0	0.0	87.3	90.8	90.4	90.6	0.2
Mining and logging.....	97.4	109.3	111.0	111.1	0.1	107.2	124.4	124.6	124.8	0.2
Construction.....	71.6	73.4	73.1	73.0	-0.1	78.4	80.8	80.6	80.5	-0.1
Manufacturing.....	83.7	85.5	85.0	85.2	0.2	90.9	94.3	93.6	94.2	0.6
Durable goods.....	81.1	83.7	83.5	83.6	0.1	89.3	93.7	93.5	94.0	0.5
Nondurable goods.....	88.3	88.6	88.1	88.1	0.0	93.8	95.2	94.3	94.7	0.4
Private service-providing.....	95.2	96.9	97.0	97.1	0.1	102.7	106.5	106.7	107.3	0.6
Trade, transportation, and utilities.....	91.7	93.3	93.4	93.6	0.2	97.1	100.5	100.7	101.4	0.7
Wholesale trade.....	90.9	93.5	93.4	93.4	0.0	99.3	102.6	102.5	103.1	0.6
Retail trade.....	91.9	92.7	92.8	92.9	0.1	94.8	96.7	97.0	98.0	1.0
Transportation and warehousing.....	92.2	94.5	94.5	94.5	0.0	97.9	103.6	103.8	103.8	0.0
Utilities.....	97.9	100.4	99.3	99.5	0.2	105.2	112.1	111.1	110.1	-0.9
Information.....	90.4	89.7	89.7	89.7	0.0	98.0	101.0	100.5	100.2	-0.3
Financial activities.....	92.9	93.2	93.0	93.7	0.8	98.9	100.9	100.6	100.9	0.3
Professional and business services.....	93.1	96.3	96.3	96.5	0.2	103.1	107.9	108.4	109.6	1.1
Education and health services.....	104.5	106.4	106.4	107.0	0.6	112.4	117.3	117.4	118.7	1.1
Leisure and hospitality.....	95.8	97.4	97.2	97.4	0.2	101.0	104.0	103.5	103.8	0.3
Other services.....	94.2	95.9	95.7	95.7	0.0	107.6	111.1	111.2	111.4	0.2

1 The indexes of aggregate weekly hours are calculated by dividing the current month's estimates of aggregate hours by the corresponding 2007 annual average aggregate hours. Aggregate hours estimates are the product of estimates of average weekly hours and employment.

2 The indexes of aggregate weekly payrolls are calculated by dividing the current month's estimates of aggregate weekly payrolls by the corresponding 2007 annual average aggregate weekly payrolls. Aggregate payrolls estimates are the product of estimates of average hourly earnings, average weekly hours, and employment.

p Preliminary

ESTABLISHMENT DATA

Table B-5. Employment of women on nonfarm payrolls by industry sector, seasonally adjusted

Industry	Women employees (in thousands)				Percent of all employees			
	July 2010	May 2011	June 2011 ^P	July 2011 ^P	July 2010	May 2011	June 2011 ^P	July 2011 ^P
Total nonfarm.....	64,671	64,842	64,853	64,834	49.8	49.5	49.5	49.4
Total private.....	51,811	52,271	52,281	52,306	48.3	48.0	48.0	47.9
Goods-producing.....	4,095	4,059	4,064	4,062	23.0	22.5	22.5	22.5
Mining and logging.....	97	104	105	105	13.6	13.3	13.3	13.1
Construction.....	720	707	709	713	13.1	12.8	12.8	12.9
Manufacturing.....	3,278	3,248	3,250	3,244	28.3	27.7	27.7	27.6
Durable goods.....	1,735	1,721	1,726	1,724	24.4	23.7	23.7	23.6
Nondurable goods.....	1,543	1,527	1,524	1,520	34.5	34.4	34.4	34.3
Private service-providing.....	47,716	48,212	48,217	48,244	53.3	53.0	53.0	53.0
Trade, transportation, and utilities.....	10,003	10,001	9,999	9,999	40.6	40.2	40.1	40.1
Wholesale trade.....	1,635.8	1,663.0	1,665.3	1,669.4	30.0	30.0	30.0	30.1
Retail trade.....	7,223.8	7,195.3	7,190.9	7,190.0	50.1	49.5	49.4	49.3
Transportation and warehousing.....	1,004.6	1,008.0	1,008.1	1,004.7	24.0	23.6	23.6	23.5
Utilities.....	138.4	134.7	134.9	134.9	25.1	24.4	24.5	24.5
Information.....	1,102	1,092	1,091	1,092	40.7	40.7	40.6	40.7
Financial activities.....	4,484	4,454	4,446	4,441	58.9	58.4	58.4	58.4
Professional and business services.....	7,409	7,624	7,625	7,624	44.4	44.4	44.4	44.3
Education and health services.....	15,090	15,292	15,304	15,325	77.1	76.7	76.8	76.7
Leisure and hospitality.....	6,789	6,876	6,878	6,888	52.2	52.2	52.1	52.1
Other services.....	2,839	2,873	2,874	2,875	52.9	52.8	52.8	52.8
Government.....	12,860	12,571	12,572	12,528	57.0	56.9	57.0	56.9

p Preliminary

ESTABLISHMENT DATA

Table B-6. Employment of production and nonsupervisory employees on private nonfarm payrolls by industry sector, seasonally adjusted¹

[In thousands]

Industry	July 2010	May 2011	June 2011 ^p	July 2011 ^p
Total private.....	88,487	89,760	89,832	89,967
Goods-producing.....	12,795	12,986	12,999	13,043
Mining and logging.....	533	587	593	598
Construction.....	4,139	4,178	4,178	4,190
Manufacturing.....	8,123	8,221	8,228	8,255
Durable goods.....	4,874	4,985	4,997	5,025
Nondurable goods.....	3,249	3,236	3,231	3,230
Private service-providing.....	75,692	76,774	76,833	76,924
Trade, transportation, and utilities.....	20,861	21,056	21,085	21,102
Wholesale trade.....	4,376.8	4,438.1	4,441.9	4,443.2
Retail trade.....	12,410.9	12,509.3	12,527.0	12,541.4
Transportation and warehousing.....	3,632.2	3,667.4	3,675.2	3,676.6
Utilities.....	441.1	441.6	441.0	440.6
Information.....	2,173	2,156	2,155	2,151
Financial activities.....	5,876	5,837	5,821	5,821
Professional and business services.....	13,663	14,095	14,104	14,137
Education and health services.....	17,156	17,449	17,464	17,502
Leisure and hospitality.....	11,479	11,627	11,652	11,660
Other services.....	4,484	4,554	4,552	4,551

¹ Data relate to production employees in mining and logging and manufacturing, construction employees in construction, and nonsupervisory employees in the service-providing industries. These groups account for approximately four-fifths of the total employment on private nonfarm payrolls.

^p Preliminary

ESTABLISHMENT DATA

Table B-7. Average weekly hours and overtime of production and nonsupervisory employees on private nonfarm payrolls by industry sector, seasonally adjusted¹

Industry	July 2010	May 2011	June 2011 ^p	July 2011 ^p
AVERAGE WEEKLY HOURS				
Total private.....	33.5	33.6	33.6	33.6
Goods-producing.....	40.3	40.9	40.9	40.9
Mining and logging.....	44.7	46.5	47.2	46.4
Construction.....	38.2	39.1	39.0	39.2
Manufacturing.....	41.1	41.4	41.4	41.4
Durable goods.....	41.4	41.8	41.8	41.7
Nondurable goods.....	40.7	40.9	40.8	40.9
Private service-providing.....	32.3	32.3	32.4	32.4
Trade, transportation, and utilities.....	33.4	33.6	33.7	33.7
Wholesale trade.....	38.0	38.5	38.5	38.4
Retail trade.....	30.4	30.3	30.4	30.5
Transportation and warehousing.....	37.3	37.8	38.0	37.9
Utilities.....	42.2	42.4	42.1	42.1
Information.....	36.2	36.4	36.3	36.4
Financial activities.....	36.2	36.2	36.2	36.3
Professional and business services.....	35.2	35.1	35.2	35.2
Education and health services.....	32.1	32.3	32.3	32.4
Leisure and hospitality.....	24.9	24.8	24.8	24.8
Other services.....	30.8	30.7	30.7	30.6
AVERAGE OVERTIME HOURS				
Manufacturing.....	3.8	4.1	4.1	4.1
Durable goods.....	3.8	4.2	4.2	4.1
Nondurable goods.....	3.7	4.0	3.9	4.0

¹ Data relate to production employees in mining and logging and manufacturing, construction employees in construction, and nonsupervisory employees in the service-providing industries. These groups account for approximately four-fifths of the total employment on private nonfarm payrolls.

^p Preliminary

ESTABLISHMENT DATA

Table B-8. Average hourly and weekly earnings of production and nonsupervisory employees on private nonfarm payrolls by industry sector, seasonally adjusted¹

Industry	Average hourly earnings				Average weekly earnings			
	July 2010	May 2011	June 2011 ^p	July 2011 ^p	July 2010	May 2011	June 2011 ^p	July 2011 ^p
Total private.....	\$19.08	\$19.42	\$19.44	\$19.52	\$ 639.18	\$ 652.51	\$ 653.18	\$ 655.87
Goods-producing.....	20.26	20.64	20.62	20.74	816.48	844.18	843.36	848.27
Mining and logging.....	23.92	24.47	24.46	24.70	1,069.22	1,137.86	1,154.51	1,146.08
Construction.....	23.22	23.56	23.53	23.66	887.00	921.20	917.67	927.47
Manufacturing.....	18.60	18.94	18.91	19.02	764.46	784.12	782.87	787.43
Durable goods.....	19.76	20.14	20.09	20.23	818.06	841.85	839.76	843.59
Nondurable goods.....	16.84	17.04	17.05	17.10	685.39	696.94	695.64	699.39
Private service-providing.....	18.83	19.16	19.18	19.25	608.21	618.87	621.43	623.70
Trade, transportation, and utilities.....	16.81	17.13	17.14	17.18	561.45	575.57	577.62	578.97
Wholesale trade.....	21.55	21.98	22.01	22.11	818.90	846.23	847.39	849.02
Retail trade.....	13.23	13.41	13.45	13.50	402.19	406.32	408.88	411.75
Transportation and warehousing.....	19.12	19.48	19.42	19.45	713.18	736.34	737.96	737.16
Utilities.....	30.22	30.80	30.77	30.84	1,275.28	1,305.92	1,295.42	1,298.36
Information.....	26.04	26.57	26.35	26.55	942.65	967.15	956.51	966.42
Financial activities.....	21.54	21.74	21.74	21.80	779.75	786.99	786.99	791.34
Professional and business services.....	22.85	23.11	23.19	23.25	804.32	811.16	816.29	818.40
Education and health services.....	20.14	20.64	20.71	20.83	646.49	666.67	668.93	674.89
Leisure and hospitality.....	11.33	11.50	11.47	11.49	282.12	285.20	284.46	284.95
Other services.....	17.09	17.21	17.25	17.29	526.37	528.35	529.58	529.07

¹ Data relate to production employees in mining and logging and manufacturing, construction employees in construction, and nonsupervisory employees in the service-providing industries. These groups account for approximately four-fifths of the total employment on private nonfarm payrolls.

^p Preliminary

ESTABLISHMENT DATA

Table B-9. Indexes of aggregate weekly hours and payrolls for production and nonsupervisory employees on private nonfarm payrolls by industry sector, seasonally adjusted¹

[2002=100]

Industry	Index of aggregate weekly hours ²					Index of aggregate weekly payrolls ³				
	July 2010	May 2011	June 2011 ^P	July 2011 ^P	Percent change from: June 2011 - July 2011 ^P	July 2010	May 2011	June 2011 ^P	July 2011 ^P	Percent change from: June 2011 - July 2011 ^P
Total private.....	99.0	100.8	100.8	101.0	0.2	126.3	130.8	131.0	131.7	0.5
Goods-producing.....	78.8	81.2	81.2	81.5	0.4	97.8	102.6	102.6	103.5	0.9
Mining and logging.....	126.6	145.1	148.7	147.4	-0.9	176.1	206.4	211.6	211.8	0.1
Construction.....	79.2	81.8	81.6	82.2	0.7	99.3	104.1	103.7	105.1	1.4
Manufacturing.....	76.6	78.1	78.2	78.4	0.3	93.2	96.8	96.7	97.6	0.9
Durable goods.....	75.8	78.3	78.5	78.7	0.3	93.5	98.4	98.4	99.4	1.0
Nondurable goods.....	77.9	78.0	77.7	77.8	0.1	92.7	93.9	93.6	94.1	0.5
Private service-providing.....	104.5	106.0	106.4	106.6	0.2	135.0	139.3	140.0	140.7	0.5
Trade, transportation, and utilities.....	97.1	98.6	99.1	99.1	0.0	116.5	120.5	121.1	121.5	0.3
Wholesale trade.....	97.9	100.6	100.7	100.5	-0.2	124.3	130.3	130.6	130.9	0.2
Retail trade.....	95.5	95.9	96.4	96.8	0.4	108.3	110.3	111.1	112.0	0.8
Transportation and warehousing.....	102.0	104.4	105.1	104.9	-0.2	123.7	129.0	129.5	129.4	-0.1
Utilities.....	95.2	95.8	95.0	94.9	-0.1	120.1	123.1	122.0	122.1	0.1
Information.....	89.8	89.6	89.3	89.4	0.1	115.8	117.8	116.5	117.5	0.9
Financial activities.....	101.8	101.1	100.8	101.1	0.3	135.6	135.9	135.5	136.3	0.6
Professional and business services.....	107.8	110.9	111.3	111.5	0.2	146.5	152.5	153.5	154.3	0.5
Education and health services.....	118.8	121.6	121.7	122.3	0.5	157.3	165.0	165.7	167.5	1.1
Leisure and hospitality.....	104.8	105.7	105.9	106.0	0.1	134.8	138.0	138.0	138.3	0.2
Other services.....	96.9	98.1	98.0	97.7	-0.3	120.6	123.0	123.2	123.1	-0.1

1 Data relate to production employees in mining and logging and manufacturing, construction employees in construction, and nonsupervisory employees in the service-providing industries. These groups account for approximately four-fifths of the total employment on private nonfarm payrolls.

2 The indexes of aggregate weekly hours are calculated by dividing the current month's estimates of aggregate hours by the corresponding 2002 annual average aggregate hours. Aggregate hours estimates are the product of estimates of average weekly hours and employment.

3 The indexes of aggregate weekly payrolls are calculated by dividing the current month's estimates of aggregate weekly payrolls by the corresponding 2002 annual average aggregate weekly payrolls. Aggregate payrolls estimates are the product of estimates of average hourly earnings, average weekly hours, and employment.

p Preliminary